

APP CRS	Rwy Idg	<b>8994</b>
<b>303°</b>	TDZE	<b>4462</b>
	Apt Elev	<b>4473</b>

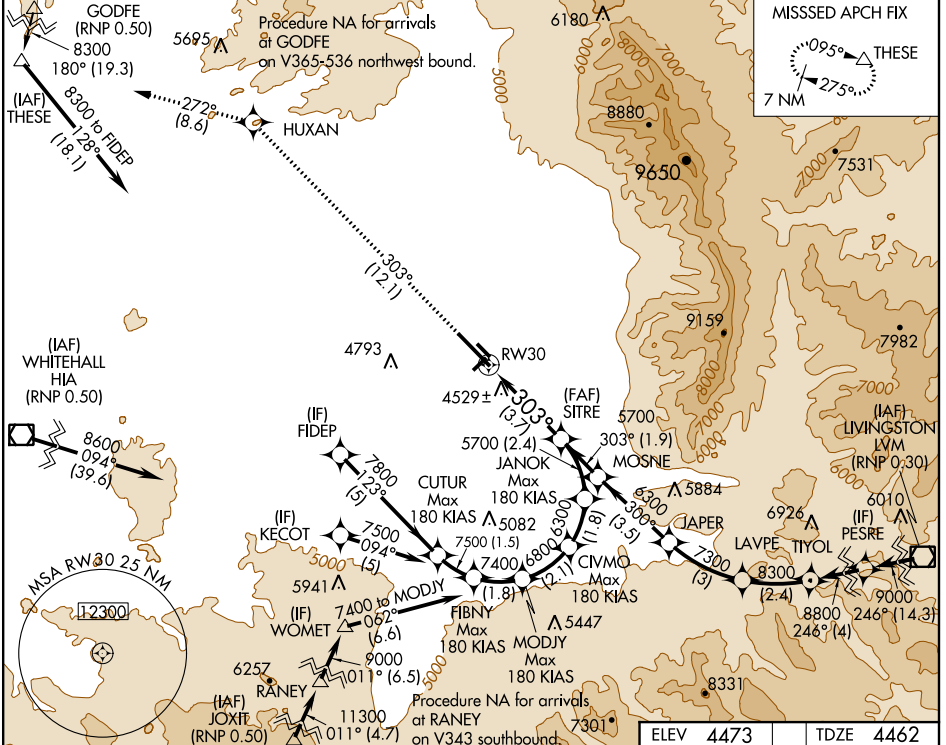
# RNAV (RNP) RWY 30

BOZEMAN YELLOWSTONE INTL (BZN)

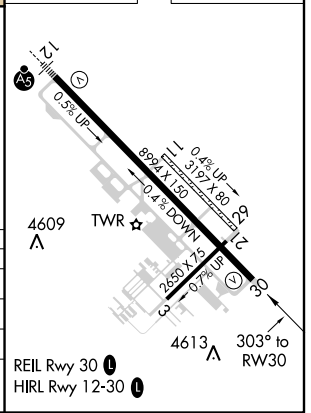
**▼** For uncompensated Baro-VNAV systems, procedure NA below -24°C (-11°F) or above 51°C (124°F). When VGSI inoperative, procedure NA at night. RF Required. \*Missed approach requires minimum climb of 350 feet per NM to 6000. GPS required.

**MISSED APPROACH:** Climb to 8300 on track 303° to HUXAN and on track 272° to THESE and hold, continue climb-in-hold to 8300.

ATIS <b>135.425</b>	SALT LAKE CENTER <b>118.975 226.675</b>	BOZEMAN TOWER* <b>118.2 (CTAF) 0</b>	GND CON <b>121.8</b>	UNICOM <b>122.95</b>
------------------------	--	---	-------------------------	-------------------------



8300	HUXAN	tr	THESE
↑	✱	272°	△
tr 303°			
See planview for multiple IF locations.			
	RW30		SITRE
			5700
			GP 3.00°
			TCH 45
CATEGORY	A	B	C
RNP 0.11* DA		4742-1	280 (300-1)
RNP 0.20 DA		4824-1 ¼	362 (400-1¼)
RNP 0.30 DA		4881-1 ½	419 (500-1½)
<b>AUTHORIZATION REQUIRED</b>			



NW-1, 07 FEB 2013 to 07 MAR 2013

NW-1, 07 FEB 2013 to 07 MAR 2013