

(BZN5.BZN) 12320

SL-59 (FAA)

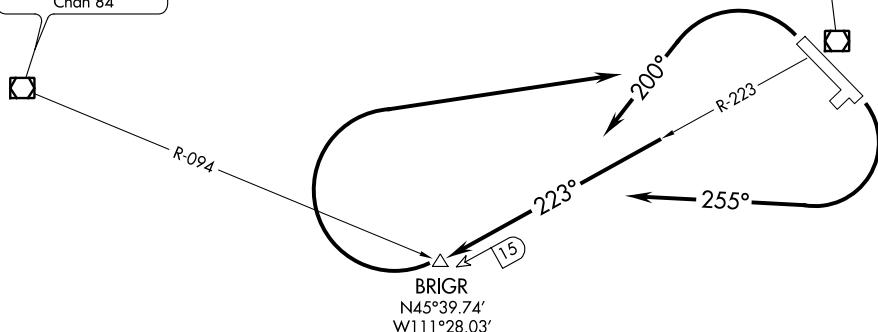
BOZEMAN YELLOWSTONE INTL (BZN)
BOZEMAN, MONTANA

BOZEMAN FIVE DEPARTURE (OBSTACLE)

ATIS 135.425
GND CON
121.8
BOZEMAN TOWER ★
118.2 (CTAF)
SALT LAKE CITY CENTER
118.975 226.675
GREAT FALLS RADIO
122.5

WHITEHALL
113.7 HIA
Chan 84

BOZEMAN
112.4 BZN
Chan 71
N45°47.03'-W111°09.33'
L-13, H-1



NW-1, 07 FEB 2013 to 07 MAR 2013

NW-1, 07 FEB 2013 to 07 MAR 2013

TAKEOFF MINIMUMS

Rwy 3, 21: NA - ATC.
Rwy 12, 30: Standard

TAKEOFF OBSTACLE NOTES

Rwy 30: Pole 641' from DER, 622' left of centerline, 35' AGL/4452' MSL.

NOTE: Chart not to scale.



DEPARTURE ROUTE DESCRIPTION

TAKEOFF RUNWAY 12: Climbing right turn heading 255° to intercept BZN R-223 to BRIGR, then continue climbing right turn direct BZN VOR/DME, cross BZN VOR/DME at or above MCA or MEA for route of flight.

TAKEOFF RUNWAY 30: Climbing left turn heading 200° to intercept BZN R-223 to BRIGR, then continue climbing right turn direct BZN VOR/DME, cross BZN VOR/DME at or above MCA or MEA for route of flight.

BOZEMAN FIVE DEPARTURE (OBSTACLE)

(BZN5.BZN) 12320

BOZEMAN, MONTANA
BOZEMAN YELLOWSTONE INTL (BZN)