

# BOBK TWO DEPARTURE (RNAV)

NW-1, 07 FEB 2013 to 07 MAR 2013

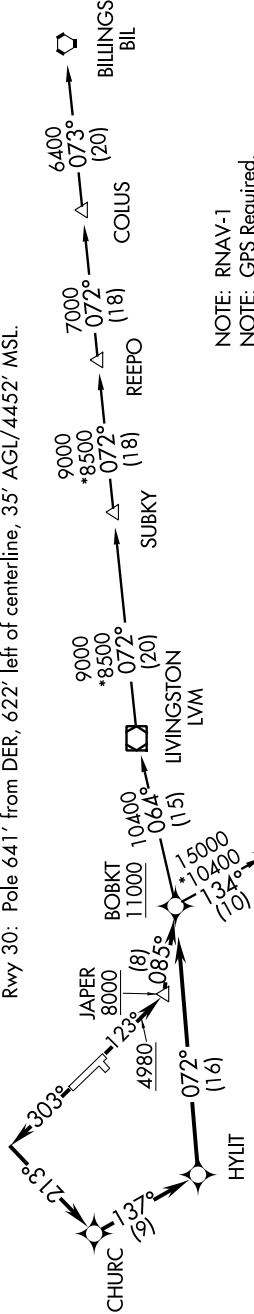
ATIS 135.425  
GND CON 121.8  
BOZEMAN TOWER \* 118.2 (CTAF)  
SALT LAKE CITY CENTER 118.975 226.675  
GREAT FALLS RADIO 122.5

### TAKEOFF MINIMUMS

Rwy 3, 21: NA - ATC.  
Rwy 12: Standard with minimum climb of 395' per NM to 1500, ATC climb of 500' per NM to 4980.  
Rwy 30: Standard with minimum climb of 250' per NM to 1500, ATC climb of 500' per NM to 4980.

### TAKEOFF OBSTACLE NOTES

Rwy 30: Pole 641' from DER, 622' left of centerline, 35' AGL/4452' MSL.



NOTE: RNAV-1  
NOTE: GPS Required.

### DEPARTURE ROUTE DESCRIPTION

**TAKEOFF RUNWAY 12:** Climb heading 123° to 4980, then direct to cross JAPER at/above 8000, then on track 085° to cross BOBK at/above 11000. Thence. . . .  
**TAKEOFF RUNWAY 30:** Climb heading 303° to intercept course 213° to CHURC, then on track 137° to HYLIT, then on track 072° to cross BOBK at/above 11000. Thence. . . . (transition) Maintain assigned altitude. Expect filed altitude 10 minutes after departure.

BILLINGS TRANSITION (BOBK2.BIL)  
BOYSEN RESERVOIR TRANSITION (BOBK2.BOY)

NOTE: Chart not to scale.

# BOBK TWO DEPARTURE (RNAV)

NW-1, 07 FEB 2013 to 07 MAR 2013