

# WYLYY ONE DEPARTURE (RNAV)

SL-58 (FAA)

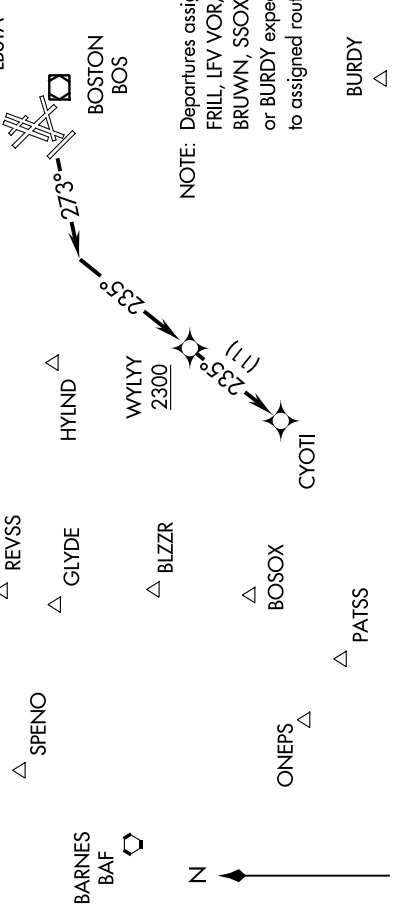
BOSTON, MASSACHUSETTS

NE-1, 07 FEB 2013 to 07 MAR 2013

NOTE: DME/DME/IRU or GPS required. NOTE: RNAV 1. NOTE: For turbojets only.  
 NOTE: Radar required. NOTE: ATC assigned. Do not file.  
 NOTE: Departure hdg/RNAV tracks/vectors are predicated on avoiding noise sensitive areas. Flight crew awareness and compliance is important in minimizing noise impacts on surrounding communities.  
 NOTE: Departures assigned routing via LBSTA, PSM VOR/DME, MHT VOR/DME, HYLIND, or REVSS direct SPENO; BLZZR direct ONEPS; PATSS, GLYDE or BOSOX expect radar vectors to the right to assigned route/fix.

ATIS DEP 127.875  
 CLNC DEL 121.65 257.8  
 GND CON 121.9  
 BOSTON TOWER 128.8 257.8  
 BOSTON DEP CON 133.0 343.6

CHESTER CTR  
 MANCHESTER MHT  
 PEASE PSM

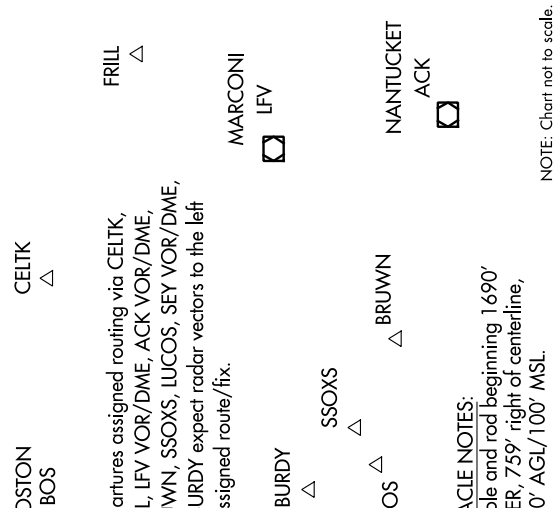


NOTE: Departures assigned routing via CELTK, FRILL, LFV VOR/DME, ACK VOR/DME, BRUWN, SSOXS, LUCOS, SEY VOR/DME, or BURDY expect radar vectors to the left to assigned route/fix.

TAKEOFF OBSTACLE NOTES:  
 Rwy 27: Light pole and rod beginning 1690' from DER, 759' right of centerline, up to 60' AGL/100' MSL.

TAKEOFF MINIMUMS:  
 Rwy 4L, 4R, 9, 14, 15L, 15R, 22L, 22R, 32, 33L, 33R: NA-ATC.  
 Rwy 27: Standard with minimum climb of 474' per NM to 2300.

**DEPARTURE ROUTE DESCRIPTION**  
**TAKEOFF RWY 27:** Climb heading 273° to intercept course 235° to cross WYLYY at or above 2300, then on depicted route to CYOTI, thence. . . . .  
 . . . . . expect vectors to assigned fix/NAVAID (see notes). Maintain 5000 or lower assigned altitude. Expect clearance to filed altitude/flight level within ten (10) minutes after departure.



NOTE: Chart not to scale.

# WYLYY ONE DEPARTURE (RNAV)

NE-1, 07 FEB 2013 to 07 MAR 2013