

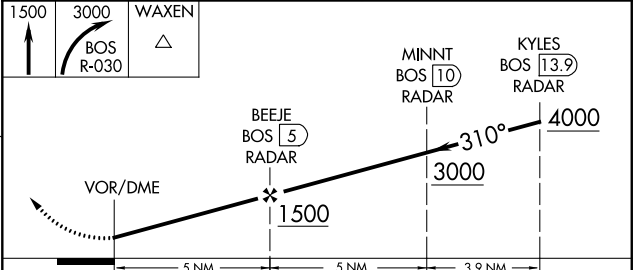
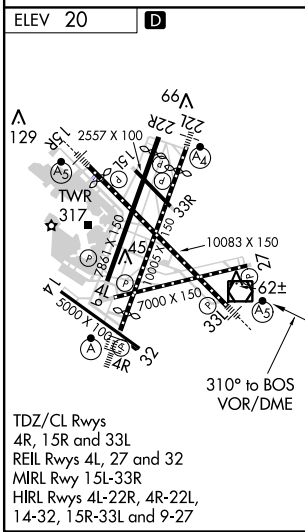
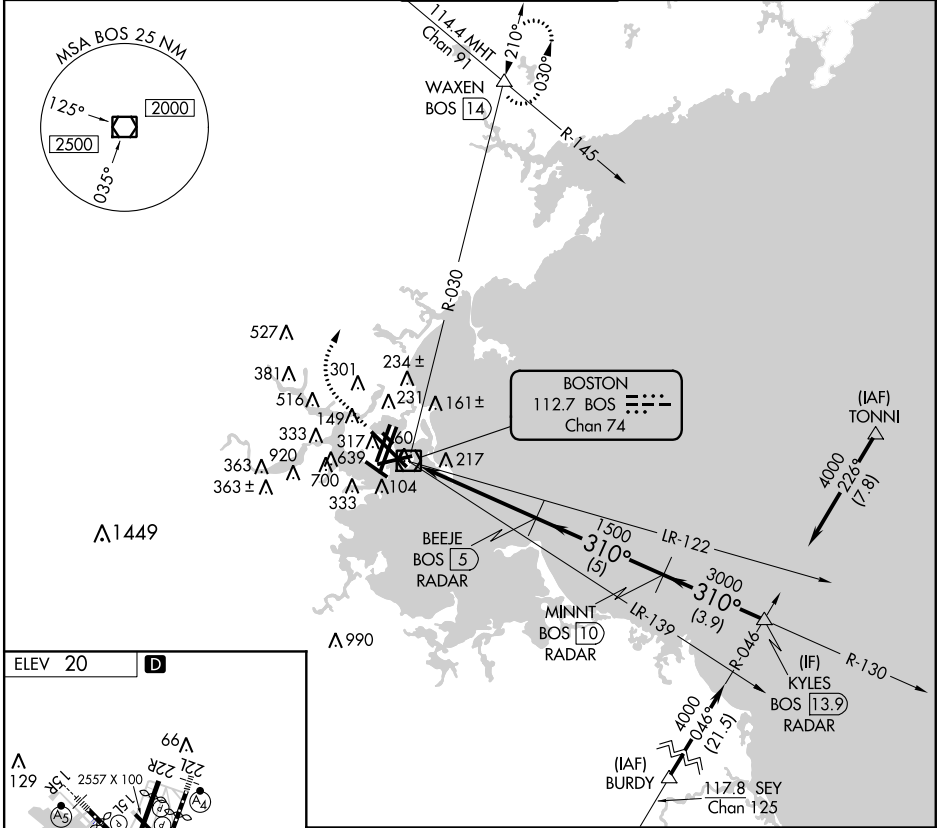
VOR/DME BOS <b>112.7</b> Chan <b>74</b>	APP CRS <b>310°</b>	Rwy ldg TDZE Apt Elev <b>N/A</b> <b>N/A</b> <b>20</b>
---	------------------------	--

# VOR/DME-A

BOSTON/GENERAL EDWARD LAWRENCE LOGAN INTL (BOS)

<p><b>▽</b> Circling NA to Rwy 14. <b>△</b> Circling NA for Cats C and D west of Rwys 4L and 15R.</p>	<p>MISSED APPROACH: Climb to 1500 then climbing right turn to 3000 on BOS VOR/DME R-030 to WAXEN INT/BOS 14 DME and hold.</p>
---	---

<p>ARR <b>135.0</b> DEP <b>127.875</b></p>	<p>BOSTON APP CON <b>120.6 263.1</b></p>	<p>BOSTON TOWER <b>128.8 257.8</b></p>	<p>GND CON <b>121.9</b></p>	<p>CLNC DEL <b>121.65 257.8</b></p>
--	--	--	---------------------------------	---



CATEGORY	A	B	C	D
CIRCLING	940-1¼ 920 (1000-1¼)	1000-1½ 980 (1000-1½)	640-1¾ 620 (700-1¾)	640-2 620 (700-2)

# VOR/DME-A

NE-1, 07 FEB 2013 to 07 MAR 2013

NE-1, 07 FEB 2013 to 07 MAR 2013