

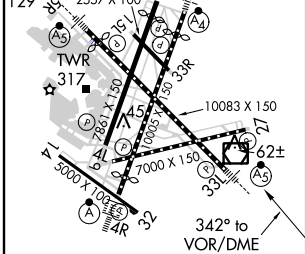
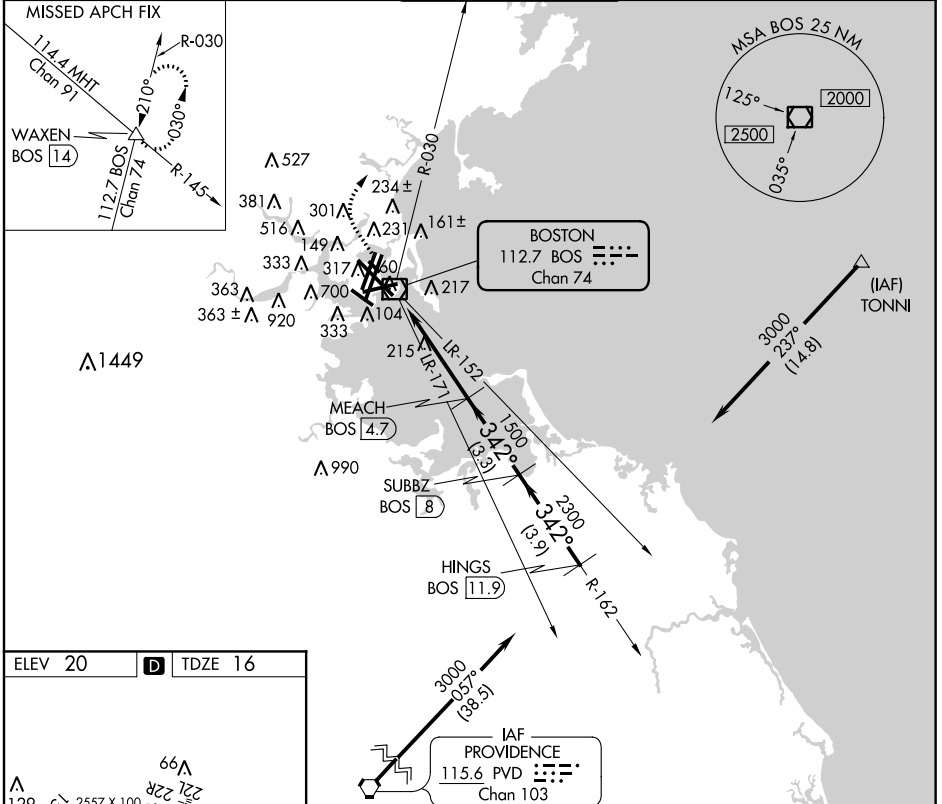
VOR/DME BOS	APP CRS	Rwy Idg	<b>10083</b>
<b>112.7</b>	<b>342°</b>	TDZE	<b>16</b>
Chan <b>74</b>		Apt Elev	<b>20</b>

# VOR/DME RWY 33L

BOSTON/GENERAL EDWARD LAWRENCE LOGAN INTL (BOS)

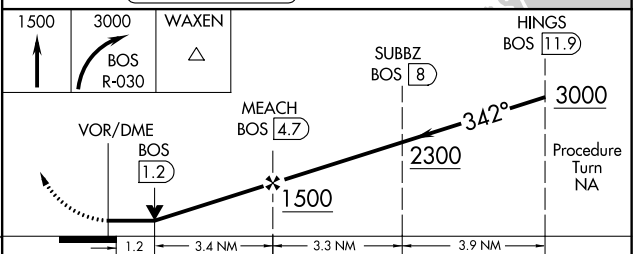
<p><b>⚠</b> Circling NA for Cats C and D west of Rwys 4L and 15R.  <b>⚠</b> Circling to Rwy 14 NA.</p>	<p>MALSR</p>	<p>MISSED APPROACH: Climb to 1500, then climbing right turn to 3000 via BOS R-030 to WAXEN INT/BOS 14 DME and hold.</p>
--	--------------	---

<p>ATIS</p> <p>ARR <b>135.0</b></p> <p>DEP <b>127.875</b></p>	<p>BOSTON APP CON</p> <p><b>120.6 263.1</b></p>	<p>BOSTON TOWER</p> <p><b>128.8 257.8</b></p>	<p>GND CON</p> <p><b>121.9</b></p>	<p>CLNC DEL</p> <p><b>121.65 257.8</b></p>
---	---	---	------------------------------------	--



ELEV 20	<b>D</b>	TDZE 16
---------	----------	---------

TDZ/CL Rwys 4R, 15R and 33L  
 REIL Rwys 4L, 27 and 32  
 MRL Rwy 15L-33R  
 HIRL Rwys 4L-22R, 4R-22L, 14-32, 15R-33L and 9-27



CATEGORY	A	B	C	D
S-33L	480/24	464 (500-½)	480/40 464 (500-¾)	480/50 464 (500-1)
CIRCLING	940-1¼ 920 (1000-1¼)	1000-1½ 980 (1000-1½)	640-1¾ 620 (700-1¾)	640-2 620 (700-2)

# VOR/DME RWY 33L

NE-1, 07 FEB 2013 to 07 MAR 2013

NE-1, 07 FEB 2013 to 07 MAR 2013