

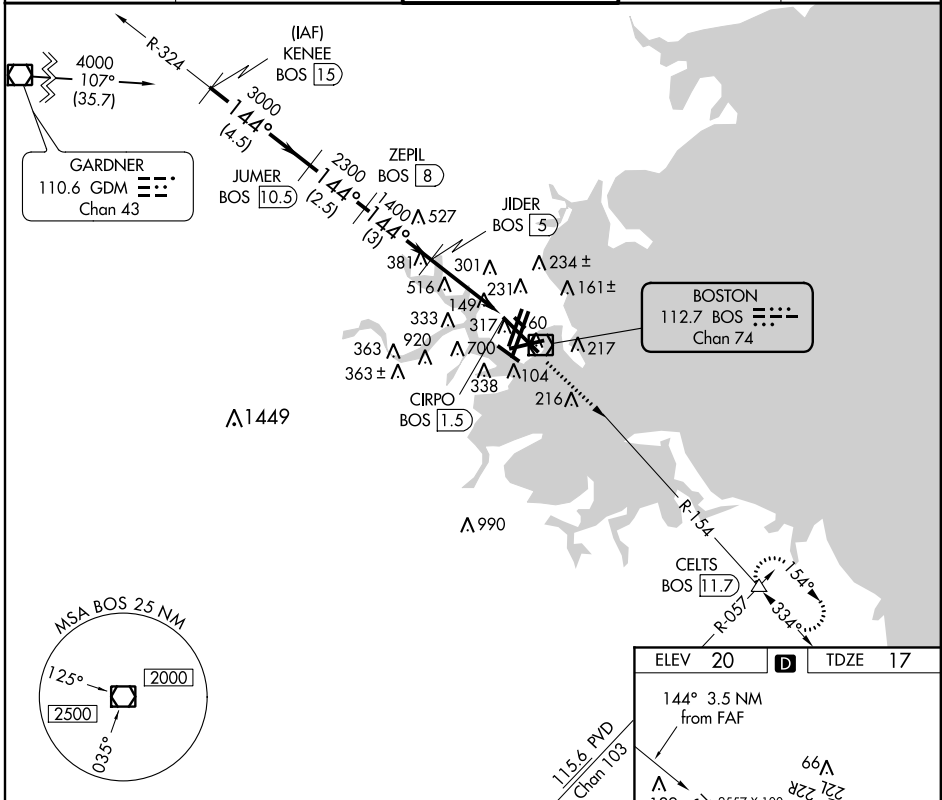
VOR/DME BOS 112.7 Chan 74	APP CRS 144°	Rwy Ldg 9202 TDZE 17 Apt Elev 20
---	------------------------	---

VOR/DME RWY 15R

BOSTON/GENERAL EDWARD LAWRENCE LOGAN INTL (BOS)

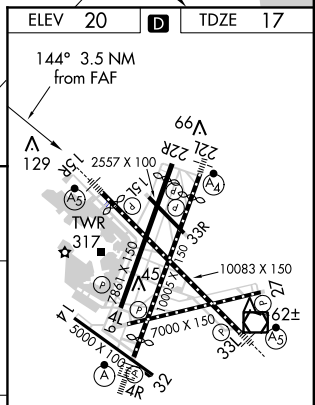
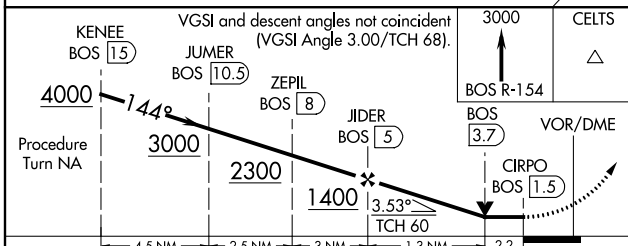
<p>▼ For inoperative MALSR, increase S-15R Cat A visibility to RVR 5000</p> <p>▲ Cat C and D Circling NA west of Rwy 4L-15R. Circling to Rwy 14 NA.</p>	<p>MALSR</p>	<p>MISSED APPROACH: Climb to 3000 via BOS R-154 to CELTS INT/BOS 11.7 DME and hold.</p>
---	--------------	---

<p>ATIS</p> <p>ARR 135.0</p> <p>DEP 127.875</p>	<p>BOSTON APP CON</p> <p>120.6 263.1</p>	<p>BOSTON TOWER</p> <p>128.8 257.8</p>	<p>GND CON</p> <p>121.9</p>	<p>CLNC DEL</p> <p>121.65 257.8</p>
---	---	---	------------------------------------	--



NE-1, 07 FEB 2013 to 07 MAR 2013

NE-1, 07 FEB 2013 to 07 MAR 2013



CATEGORY	A	B	C	D
S-15R	780/40	763 (800-¾)	780-1¾	780-2
CIRCLING	960-1¼	1000-1½	780-2¼	780-2½
	940 (1000-1¼)	980 (1000-1½)	760 (800-2¼)	760 (800-2½)

TDZ/CL Rwy 4R, 15R and 33L
 REIL Rwy 4L, 27, and 32
 MRL Rwy 15L-33R
 HIRL Rwy 4L-22R, 4R-22L, 14-32, 15R-33L, and 9-27.