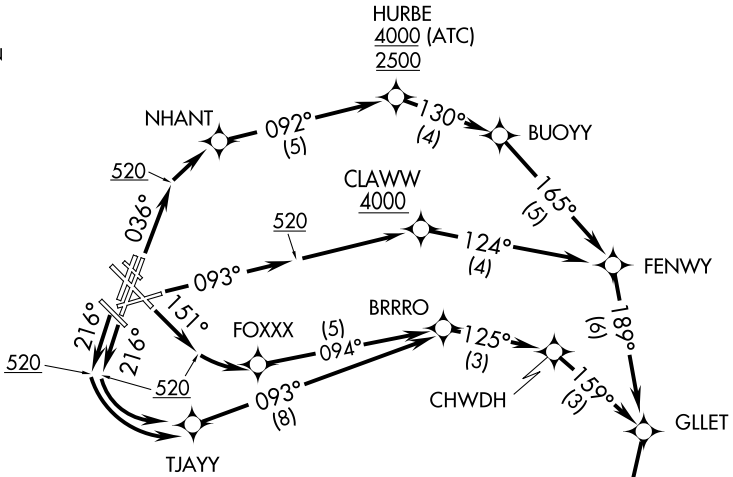


ATIS DEP 127.875  
CLNC DEL  
121.65 257.8  
GND CON  
121.9  
BOSTON TOWER  
128.8 257.8  
BOSTON DEP CON  
133.0 343.6



TAKEOFF MINIMUMS:

- Rwys 4L, 14, 15L, 27, 32, 33L, 33R: NA - ATC
- Rwy 4R: Standard with a minimum climb of 492' per NM to 2000, then ATC climb of 381' per NM to 4000.
- Rwy 9: Standard with minimum climb of 500' per NM to 4000.
- Rwy 15R: Standard with minimum climb of 429' per NM to 3100.
- Rwy 22L: 300-1 with minimum climb of 400' per NM to 2500 or standard with minimum climb of 400' per NM to 2500 if Tower reports no tall vessels in the departure area.
- Rwy 22R: Standard with minimum climb of 400' per NM to 2500.

- NOTE: DME/DME/IRU or GPS Required.
- NOTE: Radar Required for Non-GPS equipped aircraft.
- NOTE: RNAV 1.
- NOTE: For Turbojets only.
- NOTE: Departure HDG/RNAV tracks/vectors are predicated on avoiding noise sensitive areas. Flight crew awareness and compliance is important in minimizing noise impacts on surrounding communities.

(NARRATIVE ON FOLLOWING PAGE)

NOTE: Chart not to scale.

NE-1, 07 FEB 2013 to 07 MAR 2013

NE-1, 07 FEB 2013 to 07 MAR 2013