

WAAS CH 50124 W04A	APP CRS 036°	Rwy Idg THRE 18 Apt Elev 20	8851
--	------------------------	---	-------------

RNAV (GPS) RWY 4R

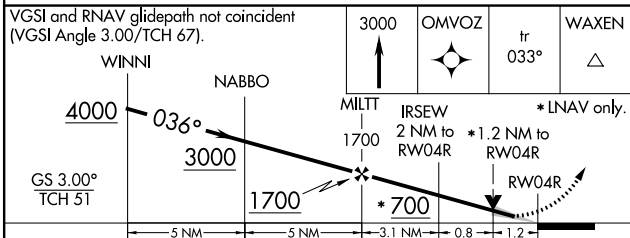
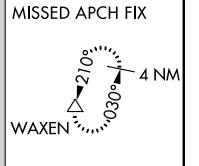
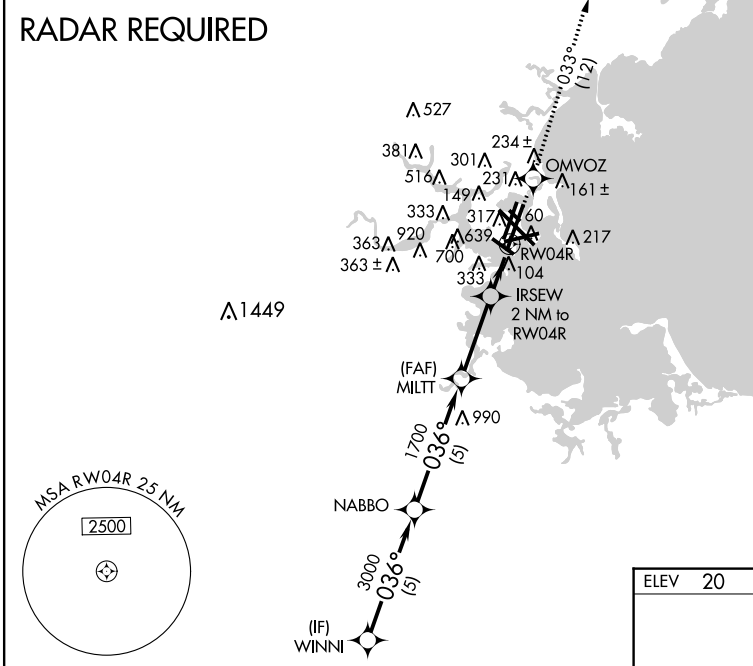
BOSTON/GENERAL EDWARD LAWRENCE LOGAN INTL (BOS)

▼ DME/DME RNP-0.3 NA. Circling NA for Cats C and D west of Rwys 4L and 15R. For uncompensated Baro-VNAV systems, LNAV/VNAV NA below -13°C (9°F) or above 43°C (109°F). When control tower reports tall vessels in approach area: increase LPV DA to 374 and all Cats visibility to RVR 4000, increase LNAV Cats A and B visibility to RVR 4000; for inoperative ALSF, increase LPV all Cats visibility to RVR 6000 and LNAV Cats A and B visibility to RVR 5000; visibility reduction by helicopters NA. When vessels taller than 144 feet present, LPV and LNAV/VNAV NA.

ALSF-2

MISSED APPROACH:
Climb to 3000 direct OMVOZ and on track 033° to WAXEN and hold.

ATIS ARR 135.0 DEP 127.875	BOSTON APP CON 120.6 263.1	BOSTON TOWER 128.8 257.8	GND CON 121.9	CLNC DEL 121.65 257.8
--	--------------------------------------	------------------------------------	-------------------------	---------------------------------



ELEV 20	D THRE 18
---------	------------------

036° to RW04R

TDZ/CL Rwys 4R, 15R and 33L
REIL Rwys 4L, 27 and 32
MIRL Rwy 15L-33R
HIRL Rwys 4L-22R, 4R-22L, 14-32, 15R-33L and 9-27

CATEGORY	A	B	C	D
LPV DA		218/24	200 (200-½)	
LNAV/VNAV DA		511/60	493 (500-1¼)	
LNAV MDA	480/24	462 (500-½)	480/50	462 (500-1)
CIRCLING	940-1¼ 920 (1000-1¼)	1000-1½ 980 (1000-1½)	640-1¾ 620 (700-1¾)	640-2 620 (700-2)

RNAV (GPS) RWY 4R

NE-1, 07 FEB 2013 to 07 MAR 2013

NE-1, 07 FEB 2013 to 07 MAR 2013