


WAAS CH 69525 W33A	APP CRS 331°	Rwy Idg 10083 THRE 15 Apt Elev 20
--	------------------------	--

RNAV (GPS) RWY 33L

BOSTON/GENERAL EDWARD LAWRENCE LOGAN INTL (BOS)

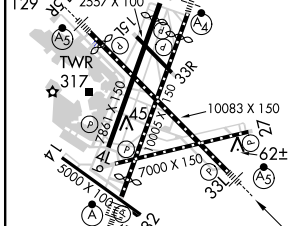
<p>▽ DME/DME RNP-0.3 NA. Circling NA to Rwy 14. Circling NA for Cats C and D west of Rwys 4L and 15R. For uncompensated Baro-VNAV systems, LNAV/VNAV NA below -13°C (9°F) or above 43°C (109°F).</p>	<p>MALSR</p> 	<p>MISSED APPROACH: Climb to 600 then climbing right turn to 3000 direct WAXEN and hold.</p>
---	---	---

<p>ATIS ARR 135.0 DEP 127.875</p>	<p>BOSTON APP CON 120.6 263.1</p>	<p>BOSTON TOWER 128.8 257.8</p>	<p>GND CON 121.9</p>	<p>CLNC DEL 121.65 257.8</p>
---	--	--	---------------------------------	---

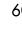
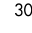
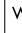
RADAR REQUIRED



ELEV 20	D	THRE 15
---------	----------	---------



TDZ/CL Rwys 4R, 15R and 33L
REIL Rwys 4L, 27 and 32
MIRL Rwy 15L-33R
HIRL Rwys 4L-22R, 4R-22L, 14-32, 15R-33L and 9-27

600	3000	WAXEN	VGSI and RNAV glidepath not coincident (VGSI Angle 3.00/TCH 68).	BENNN
				
*LNAV only.		*1.1 NM to UVEYI RW33L	1500	4000
		*2.5 NM to UVEYI RW33L	3000	
		*700	1500	GS 3.00° TCH 57
		1.1 NM	0.9 NM	2.5 NM
		4.9 NM	5.4 NM	

CATEGORY	A	B	C	D
LPV DA		215/24	200 (200-½)	
LNAV/VNAV DA		323/24	308 (400-½)	
LNAV MDA	440/24	425 (500-½)	440/40	425 (500-¾)
CIRCLING	940-1¼ 920 (1000-1¼)	1000-1½ 980 (1000-1½)	640-1¾ 620 (700-1¾)	640-2 620 (700-2)

NE-1, 07 FEB 2013 to 07 MAR 2013

NE-1, 07 FEB 2013 to 07 MAR 2013