

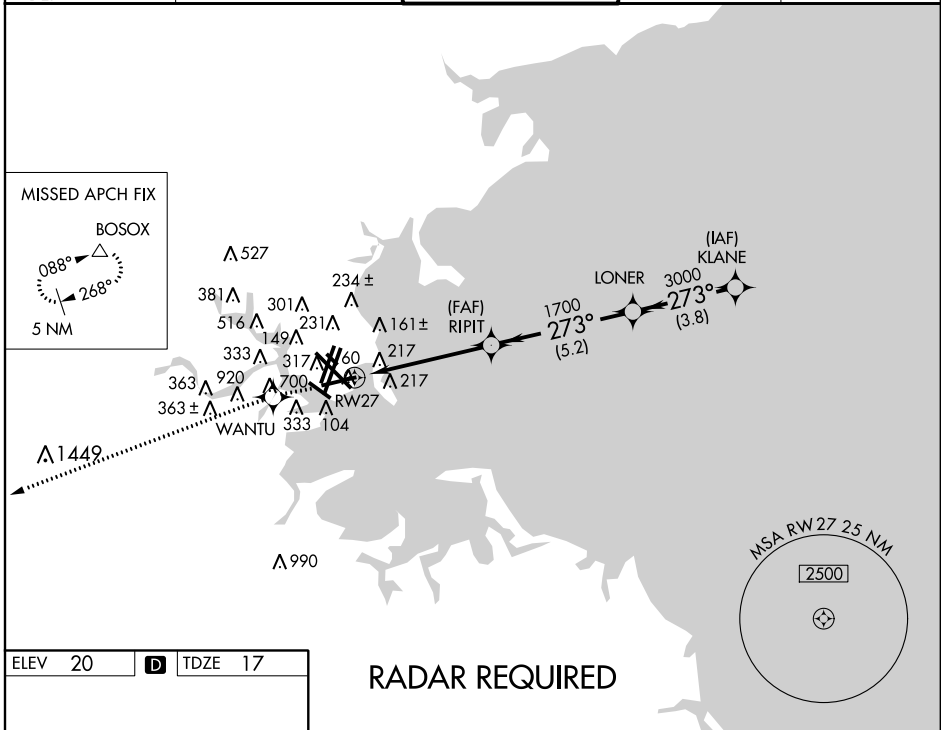
APP CRS	Rwy Idg	7000
273°	TDZE	17
	Apt Elev	20

RNAV (GPS) RWY 27

BOSTON/GENERAL EDWARD LAWRENCE LOGAN INTL (BOS)

Baro-NAV NA below -15°C (5°F). Cats C and D Circling NA west of Rwys 4L and 15R. DME/DME RNP-0.3 NA. Circling to Rwy 14 NA.	MISSED APPROACH: Climb to 3000 direct WANTU WP and 267° track to BOSOX WP and hold.
---	---

ATIS	BOSTON APP CON	BOSTON TOWER	GND CON	CLNC DEL
ARR 135.0	120.6 263.1	128.8 257.8	121.9	121.65 257.8
DEP 127.875				

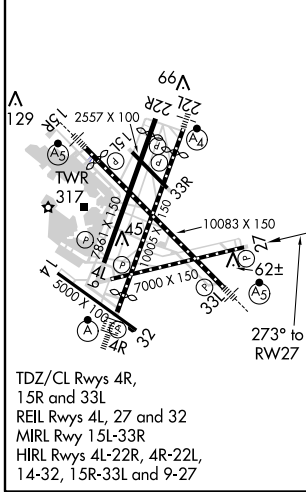


NE-1, 07 FEB 2013 to 07 MAR 2013

NE-1, 07 FEB 2013 to 07 MAR 2013

ELEV 20	D	TDZE 17
---------	----------	---------

RADAR REQUIRED



3000	↑	WANTU	tr 267°	BOSOX	△	VGS1 and RNAV glidepath not coincident (VGS1 Angle 3.00/TCH 71). KLANE		
				LONER		4000		
				RIPIT		3000		
						1700		
						GS 3.00° TCH 57		
						1.7 NM		
						3.3 NM		
						5.2 NM		
						3.8 NM		
CATEGORY		A		B		C		D
GLS PA DA	NA							
LNNAV/VNAV DA	504-1 3/4 487 (500-1 3/4)							
LNNAV MDA	640-1		623 (700-1)		640-1 3/4		623 (700-1 3/4)	
CIRCLING	940-1 1/4		920 (1000-1 1/4)		1000-1 1/2		980 (1000-1 1/2)	
	640-2		623 (700-1 3/4)		640-1 3/4		623 (700-2)	
	620 (700-1 3/4)		640-2		620 (700-1 3/4)		620 (700-2)	