

WAAS CH <b>45925</b> <b>W22A</b>	APP CRS <b>216°</b>	Rwy Idg THRE <b>16</b> Apt Elev <b>20</b>	<b>8806</b>
--	------------------------	---	-------------

**RNAV (GPS) RWY 22L**  
BOSTON/GENERAL EDWARD LAWRENCE LOGAN INTL (BOS)

<b>▽</b> DME/DME RNP-0.3 NA. Circling NA to Rwy 14. Circling NA for Cats C and D west of Rwys 4L and 15R. For inoperative MALSF, increase LNAV/VNAV Cat D visibility to RVR 6000 and LNAV Cat D visibility to 1½ mile. For uncompensated Baro-VNAV systems, LNAV/VNAV NA below -13°C (9°F) or above 43°C (109°F).	<b>MALSF</b> 	<b>MISSED APPROACH:</b> Climb to 3000 direct WINNI and hold.
---	------------------	---

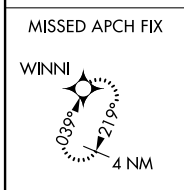
ARR DEP <b>127.875</b>	ATIS <b>135.0</b>	BOSTON APP CON <b>120.6 263.1</b>	BOSTON TOWER <b>128.8 257.8</b>	GND CON <b>121.9</b>	CLNC DEL <b>121.65 257.8</b>
---------------------------	----------------------	--------------------------------------	------------------------------------	-------------------------	---------------------------------

**RADAR REQUIRED**

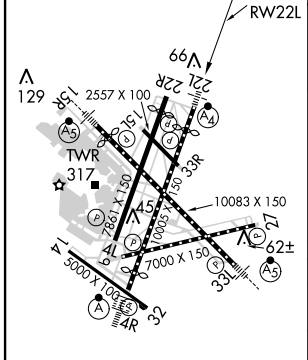


NE-1, 07 FEB 2013 to 07 MAR 2013

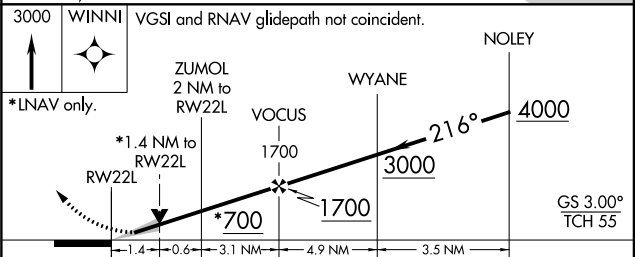
NE-1, 07 FEB 2013 to 07 MAR 2013



ELEV <b>20</b>	<b>D</b>	THRE <b>16</b>
----------------	----------	----------------



TDZ/CL Rwys 4R, 15R and 33L  
REIL Rwys 4L, 27 and 32  
MIRL Rwy 15L-33R  
HIRL Rwys 4L-22R, 4R-22L, 14-32, 15R-33L and 9-27



CATEGORY	A	B	C	D
LPV DA		216/40	200 (200-¾)	
LNAV/VNAV DA		392/50	376 (400-1)	
LNAV MDA	540/40	524 (600-¾)	540-1¼	524 (600-1¼)
CIRCLING	940-1¼ 920 (1000-1¼)	1000-1½ 980 (1000-1½)	640-1¾ 620 (700-1¾)	640-2 620 (700-2)