

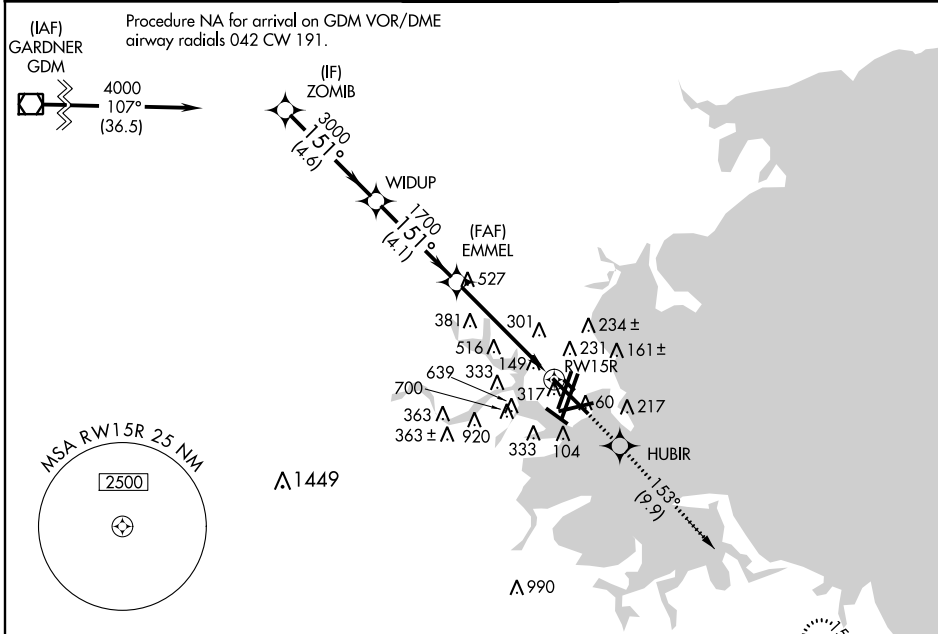
WAAS CH 42925 W15A	APP CRS 151°	Rwy Idg THRE 17 Apt Elev 20	9202
----------------------------------------	------------------------	-------------------------------------------------	-------------

RNAV (GPS) RWY 15R

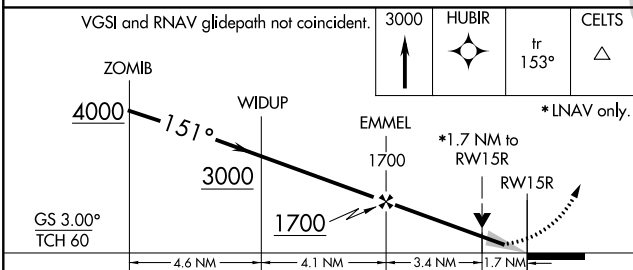
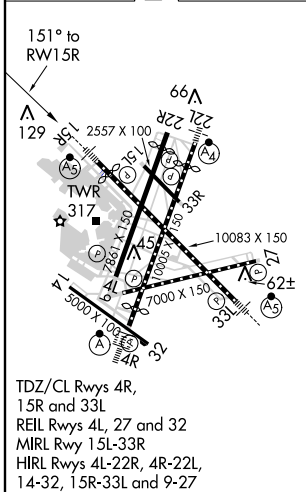
BOSTON/GENERAL EDWARD LAWRENCE LOGAN INTL (BOS)

⚠ DME/DME RNP-0.3 NA. Circling NA to Rwy 14. Circling NA for Cats C and D west of Rwys 4L and 15R. For inoperative MALSR, increase LNAV Cats C and D visibility to 1¾ mile. For uncompensated Baro-VNAV systems, LNAV/VNAV NA below -13°C (9°F) or above 43°C (109°F).	MALSR 	MISSED APPROACH: Climb to 3000 direct HUBIR and on track 153° to CELTS and hold.

ATIS ARR 135.0 DEP 127.875	BOSTON APP CON 120.6 263.1	BOSTON TOWER 128.8 257.8	GND CON 121.9	CLNC DEL 121.65 257.8
------------------------------------------------	--------------------------------------	------------------------------------	-------------------------	---------------------------------



ELEV 20	D	THRE 17
---------	----------	---------



CATEGORY	A	B	C	D
LPV DA		217/24	200 (200-½)	
LNAV/VNAV DA		567-1¾	550 (600-1¾)	
LNAV MDA	620/24	603 (600-½)	620-1¾	603 (600-1¾)
CIRCLING	940-1¼	1000-1½	640-1¾	640-2
	920 (1000-1¼)	980 (1000-1½)	620 (700-1¾)	620 (700-2)

RNAV (GPS) RWY 15R

NE-1, 07 FEB 2013 to 07 MAR 2013

NE-1, 07 FEB 2013 to 07 MAR 2013