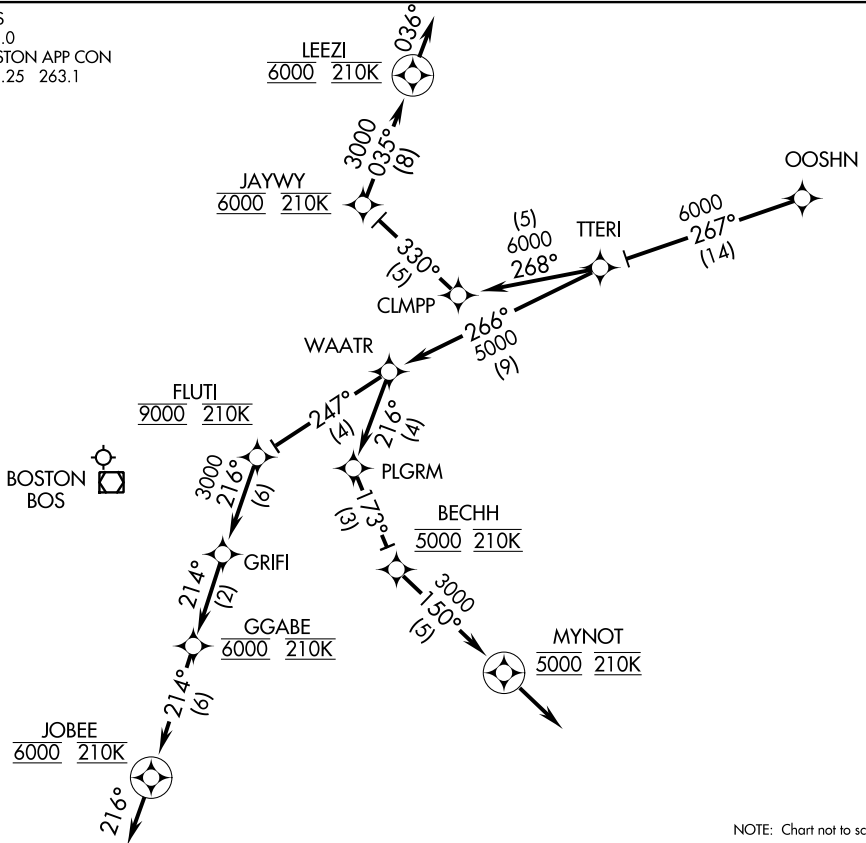


# OOSHN TWO ARRIVAL (RNAV) Arrival Routes

BOSTON, MASSACHUSETTS

ATIS  
135.0  
BOSTON APP CON  
118.25 263.1



NE-1, 07 FEB 2013 to 07 MAR 2013

NE-1, 07 FEB 2013 to 07 MAR 2013

NOTE: Chart not to scale.

## ARRIVAL ROUTE DESCRIPTION

From over OOSHN on track 267° to TTERI, thence. . . .

Landing Rwy 4L, 15R, 27, 32: From over TTERI on track 266°, expect radar vectors to final approach course.

Landing Rwy 4R: From over TTERI on track 266° to WAATR, then on track 247° to cross FLUTI at 9000 and 210K, then on track 216° to GRIFI, then on track 214° to cross GGABE at 6000 and 210K, then on track 214° to cross JOBEE at 6000 and 210K, then on track 216°, expect radar vectors to final approach course.

Landing Rwy 22R: From over TTERI on track 268°, expect radar vectors to final approach course.

Landing Rwy 22L: From over TTERI on track 268° to CLMPP then on track 330° to cross JAYWY at 6000 and 210K, then on track 035° to cross LEEZI at 6000 and 210K, then on track 036°, expect radar vectors to final approach course.

Landing Rwy 33L: From over TTERI on track 266° to WAATR, then on track 216° to PLGRM, then on track 173° to cross BECHH at 5000 and 210K, then on track 150° to cross MYNOT at 5000 and 210K, then on track 150°, expect radar vectors to final approach course.