

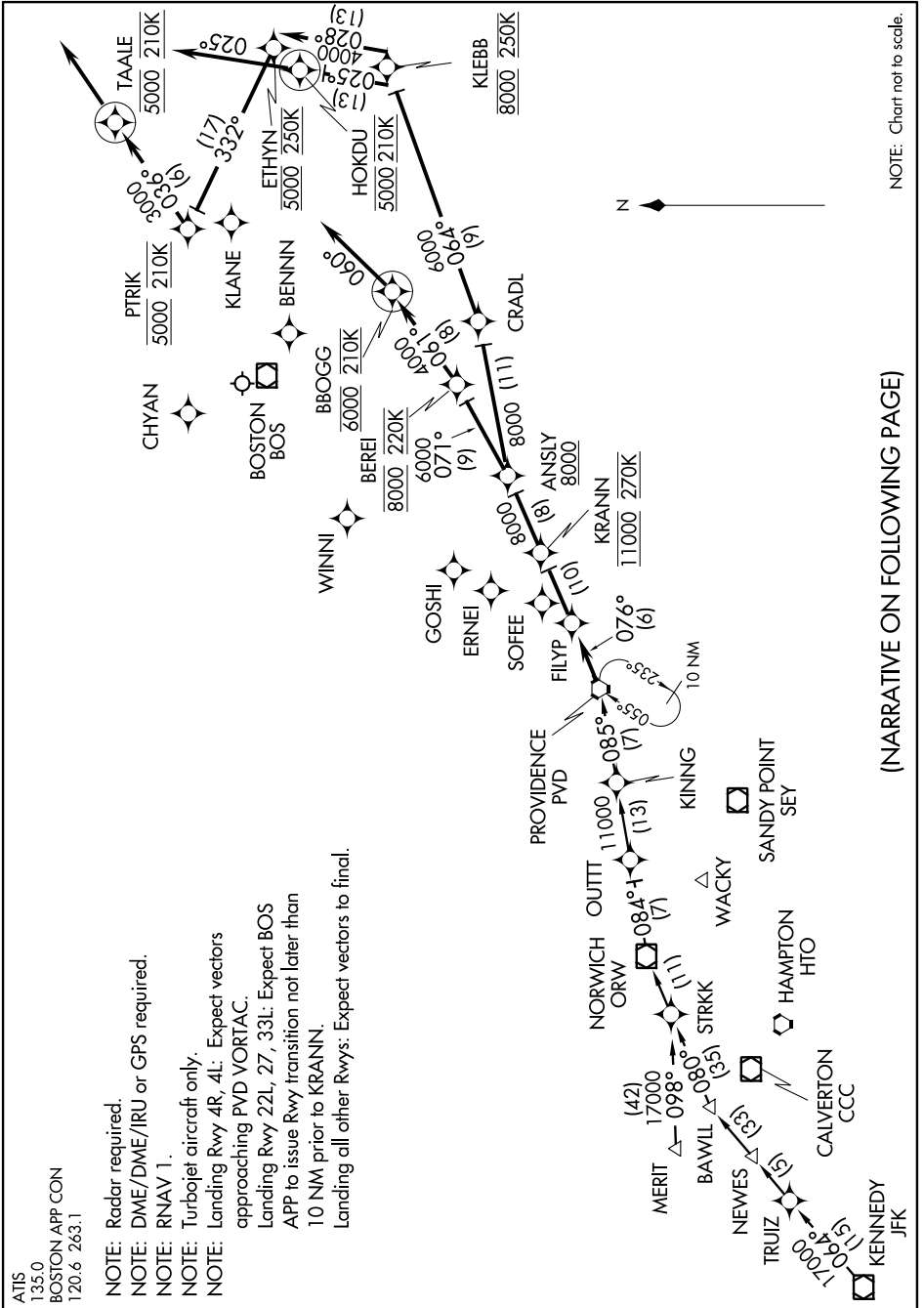
# KRANN TWO ARRIVAL (RNAV)

NE-1, 07 FEB 2013 to 07 MAR 2013

ATIS  
135.0  
BOSTON APP CON  
120.6 263.1

- NOTE: Radar required.
- NOTE: DME/DME/IRU or GPS required.
- NOTE: RNAV 1.
- NOTE: Turbojet aircraft only.
- NOTE: Landing Rwy 4R, 4L: Expect vectors approaching PVD VORTAC.
- NOTE: Landing Rwy 22L, 27, 33L: Expect BOS APP to issue Rwy transition not later than 10 NM prior to KRANN.
- NOTE: Landing all other Rwys: Expect vectors to final.

# KRANN TWO ARRIVAL (RNAV)



NOTE: Chart not to scale.

(NARRATIVE ON FOLLOWING PAGE)

NE-1, 07 FEB 2013 to 07 MAR 2013