

BOSTON, MASSACHUSETTS


AL-58 (FAA)

13010

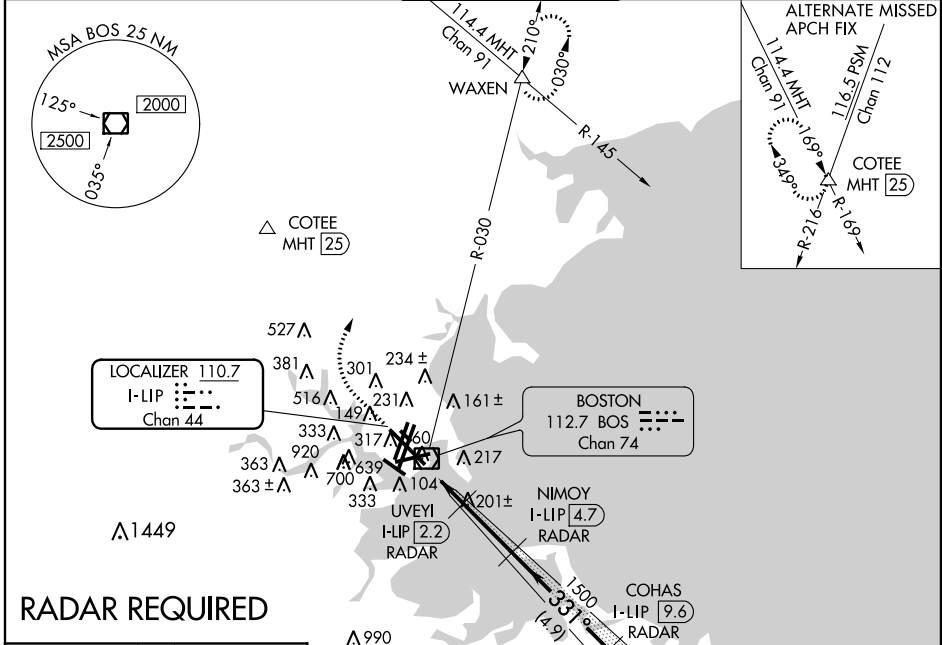
LOC/DME I-LIP	APP CRS	Rwy Idg	10083
110.7	331°	THRE	
Chan 44		Apt Elev	

ILS or LOC RWY 33L

BOSTON/GENERAL EDWARD LAWRENCE LOGAN INTL (BOS)

<p>⚠ DME or Radar required. ⚠ Circling NA for Cats C and D west of Rwy 4L and 15R. Circling NA to Rwy 14.</p>	<p>MALSR</p>  <p>MISSED APPROACH: Climb to 1500 then climbing right turn to 3000 on BOS VOR/DME R-030 to WAXEN and hold.</p>
---	--

ATIS	BOSTON APP CON	BOSTON TOWER	GND CON	CLNC DEL
ARR 135.0	120.6 263.1	128.8 257.8	121.9	121.65 257.8
DEP 127.875				

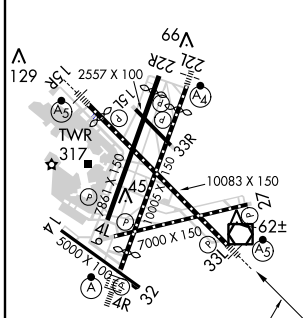


NE-1, 07 FEB 2013 to 07 MAR 2013

NE-1, 07 FEB 2013 to 07 MAR 2013

RADAR REQUIRED

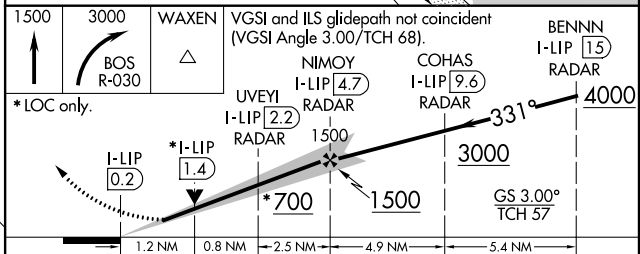
ELEV 20	D	THRE 15
---------	----------	---------



TDZ/CL Rwy 4R, 15R and 33L
 REIL Rwy 4L, 27 and 32
 MIRL Rwy 15L-33R
 HIRL Rwy 4L-22R, 4R-22L, from FAF
 14-32, 15R-33L and 9-27

FAF to MAP 4.5 NM

Knots	60	90	120	150	180
Min:Sec	4:30	3:00	2:15	1:48	1:30



CATEGORY	A	B	C	D
S-ILS 33L	215/18 200 (200-1/2)			
S-LOC 33L	460/24	445 (500-1/2)	460/45	445 (500-7/8)
CIRCLING	940-1 1/4 920 (1000-1 1/4)	1000-1 1/2 980 (1000-1 1/2)	640-1 3/4 620 (700-1 3/4)	640-2 620 (700-2)

BOSTON, MASSACHUSETTS
 Amdt 4 15DEC11

BOSTON/GENERAL EDWARD LAWRENCE LOGAN INTL (BOS)
ILS or LOC RWY 33L

42°22'N-71°00'W