

LOC/DME I-DGU <b>111.3</b> Chan <b>50</b>	APP CRS <b>273°</b>	Rwy ldg <b>7000</b> TDZE <b>17</b> Apt Elev <b>20</b>
---	------------------------	---

# ILS or LOC RWY 27

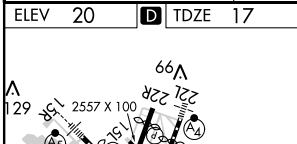
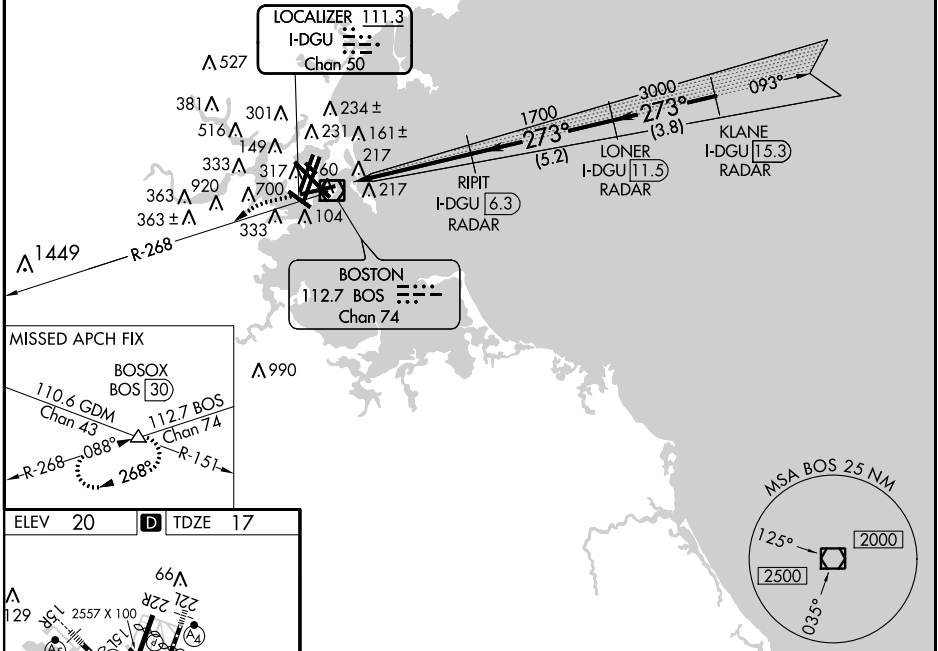
BOSTON/GENERAL EDWARD LAWRENCE LOGAN INTL (BOS)

**⚠** \* Radar or DME required.  
**⚠** Circling to Rwy 14 NA.  
 Circling NA for Cats C and D west of Rwys 4L and 15R.

MISSED APPROACH: Climb to 3000 via BOS  
 VORTAC R-268 to BOSOX INT/BOS 30 DME  
 and hold.

ARR ATIS <b>135.0</b> DEP <b>127.875</b>	BOSTON APP CON <b>120.6 263.1</b>	BOSTON TOWER <b>128.8 257.8</b>	GND CON <b>121.9</b>	CLNC DEL <b>121.65 257.8</b>
--	--------------------------------------	------------------------------------	-------------------------	---------------------------------

## RADAR REQUIRED



ELEV 20	<b>D</b>	TDZE 17		
<p>TDZ/CL Rwys 4R, 15R and 33L          REIL Rwys 4L, 27 and 32          MIRL Rwy 15L-33R          HIRL Rwys 4L-22R, 4R-22L,          14-32, 15R-33L and 9-27</p> <p>FAF to MAP 3.8 NM</p> <p>Knots 60 90 120 150 180          Min:Sec 3:48 2:32 1:54 1:31 1:16</p>				
3000	BOSOX △	VGSI and ILS glidepath not coincident (VGSI Angle 3.00/TCH 71).	LONER I-DGU [11.5] RADAR	KLANE I-DGU [15.3] RADAR
BOS R-268	RIPIT I-DGU [6.3] RADAR	I-DGU [2.5]	1700	4000
			1700	3000
			273°	GS 3.00° TCH 57
			1.2	3.8 NM
			5.2 NM	3.8 NM
CATEGORY	A	B	C	D
S-ILS 27		460-1½	443 (500-1½)	
S-LOC 27 *		460-1½	443 (500-1½)	
CIRCLING	940-1½ 920 (1000-1½)	1000-1½ 980 (1000-1½)	640-1¾ 620 (700-1¾)	640-2 620 (700-2)

# ILS or LOC RWY 27

NE-1, 07 FEB 2013 to 07 MAR 2013

NE-1, 07 FEB 2013 to 07 MAR 2013