

|                |             |          |             |
|----------------|-------------|----------|-------------|
| LOC/DME H-LGN  | APP CRS     | Rwy ldg  | <b>8806</b> |
| <b>110.3</b>   | <b>216°</b> | THRE     | <b>16</b>   |
| Chan <b>40</b> |             | Apt Elev | <b>20</b>   |

# ILS or LOC RWY 22L

BOSTON/GENERAL EDWARD LAWRENCE LOGAN INTL (BOS)

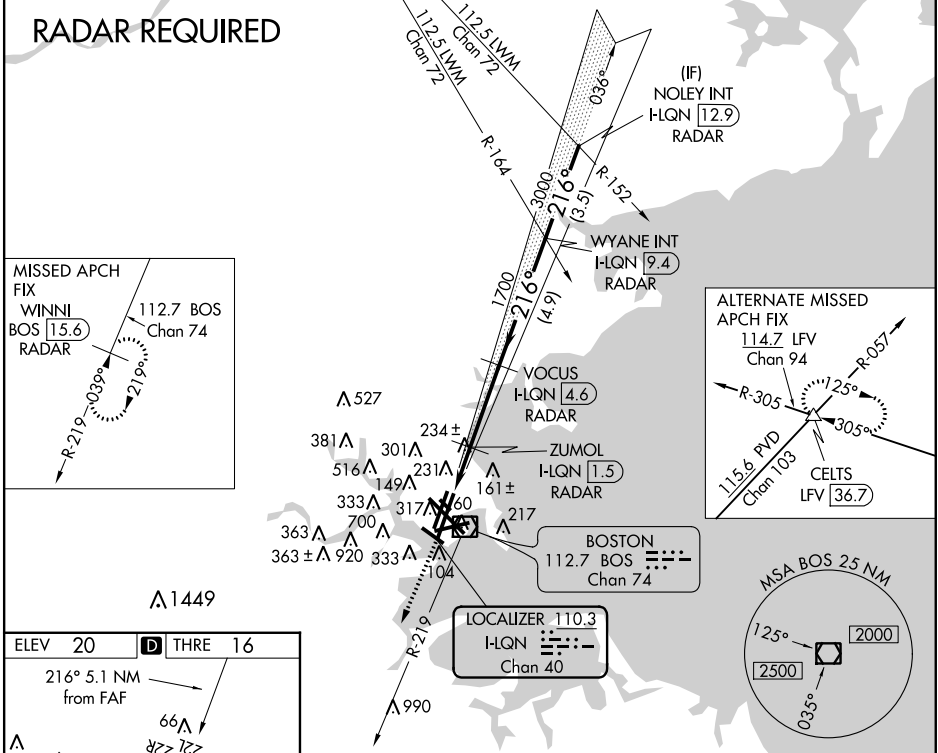
**⚠** DME or radar required.  
 Circling NA for Cats C and D west of Rws 4L and 15R.  
 Circling NA to Rwy 14.  
 For inoperative MALSF, increase S-LOC 22L Cat D visibility to 1½ mile.



MISSED APPROACH: Climb to 3000 on BOS VOR/DME R-219 to WINNI/BOS 15.6 DME/RADAR and hold.

|     |                   |                    |                    |              |                     |
|-----|-------------------|--------------------|--------------------|--------------|---------------------|
| ARR | ATIS <b>135.0</b> | BOSTON APP CON     | BOSTON TOWER       | GND CON      | CLNC DEL            |
| DEP | <b>127.875</b>    | <b>120.6 263.1</b> | <b>128.8 257.8</b> | <b>121.9</b> | <b>121.65 257.8</b> |

## RADAR REQUIRED



NE-1, 07 FEB 2013 to 07 MAR 2013

NE-1, 07 FEB 2013 to 07 MAR 2013

ELEV 20 **D** THRE 16

216° 5.1 NM from FAF

REIL Rws 4L, 27 and 32  
 MIRL Rwy 15L-33R  
 HIRL Rws 4L-22R, 4R-22L, 14-32, 15R-33L and 9-27  
 FAF to MAP 5.1 NM

|         |      |      |      |      |      |
|---------|------|------|------|------|------|
| Knots   | 60   | 90   | 120  | 150  | 180  |
| Min:Sec | 5:06 | 3:24 | 2:33 | 2:02 | 1:42 |

TDZ/CL Rws 4R, 15R and 33L

3000 WINNI BOS 15.6 RADAR VGS1 and ILS glidepath not coincident. NOLEY INT H-LGN 12.9 RADAR

BOS 219° \*LOC only. H-LGN DME ANT. \*H-LGN 0.9 ZUMOL H-LGN 1.5 RADAR VOCUS H-LGN 4.6 RADAR WYANE INT H-LGN 9.4 RADAR

1700 216° 4000 3000 GS 3.00° TCH 55

|           |                         |                          |                        |                      |
|-----------|-------------------------|--------------------------|------------------------|----------------------|
| CATEGORY  | A                       | B                        | C                      | D                    |
| S-ILS 22L | 216/40 200 (200-¾)      |                          |                        |                      |
| S-LOC 22L | 540/40                  | 524 (600-¾)              | 540-1¼                 | 524 (600-1¼)         |
| CIRCLING  | 940-1¼<br>920 (1000-1¼) | 1000-1½<br>980 (1000-1½) | 640-1¾<br>620 (700-1¾) | 640-2<br>620 (700-2) |

# ILS or LOC RWY 22L