

BOSTON, MASSACHUSETTS

AL-58 (FAA)

13010

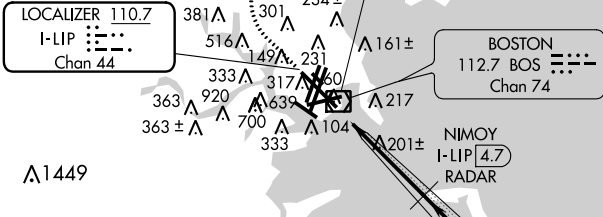
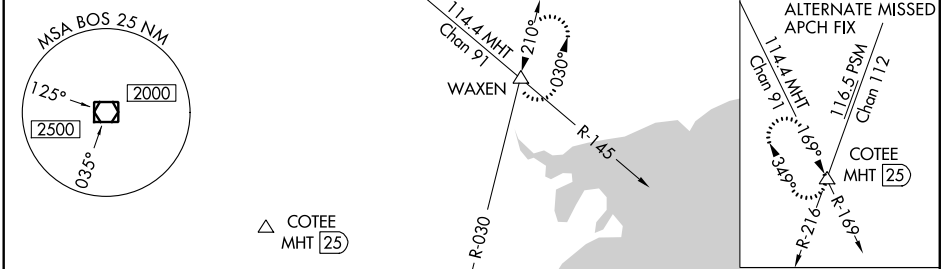
LOC/DME I-LIP 110.7 Chan 44	APP CRS 331°	Rwy Idg 10083 THRE 15 Apt Elev 20
---	------------------------	--

ILS RWY 33L (SA CAT II)

BOSTON/GENERAL EDWARD LAWRENCE LOGAN INTL (BOS)

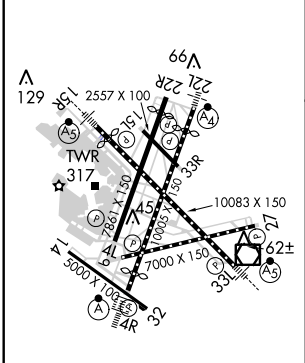
<p>Reduced lighting: Requires specific OPSPEC, MSPEC, or LOA approval and use of autoland or HUD to touchdown. DME or Radar required.</p>	<p>MALS R</p>	<p>MISSED APPROACH: Climb to 1500 then climbing right turn to 3000 on BOS VOR/DME R-030 to WAXEN and hold.</p>

ATIS ARR 135.0 DEP 127.875	BOSTON APP CON 120.6 263.1	BOSTON TOWER 128.8 257.8	GND CON 121.9	CLNC DEL 121.65 257.8
--	--------------------------------------	------------------------------------	-------------------------	---------------------------------

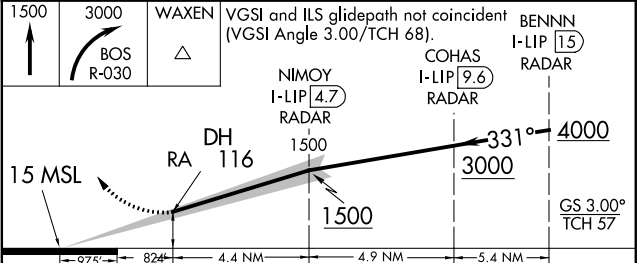


RADAR REQUIRED

ELEV 20	D	THRE 15
---------	---	---------



TDZ/CL Rws 4R, 15R and 33L
REIL Rws 4L, 27 and 32
MIRL Rwy 15L-33R
HIRL Rws 4L-22R, 4R-22L, 14-32, 15R-33L and 9-27



CATEGORY	A	B	C	D
S-ILS 33L	RA 116/12 100 DA 115			

SA CATEGORY II - SPECIAL AIRCREW & AIRCRAFT CERTIFICATION REQUIRED

BOSTON, MASSACHUSETTS
Amdt 4 15DEC11

BOSTON/GENERAL EDWARD LAWRENCE LOGAN INTL (BOS)
42°22'N-71°00'W
ILS RWY 33L (SA CAT II)

NE-1, 07 FEB 2013 to 07 MAR 2013

NE-1, 07 FEB 2013 to 07 MAR 2013