

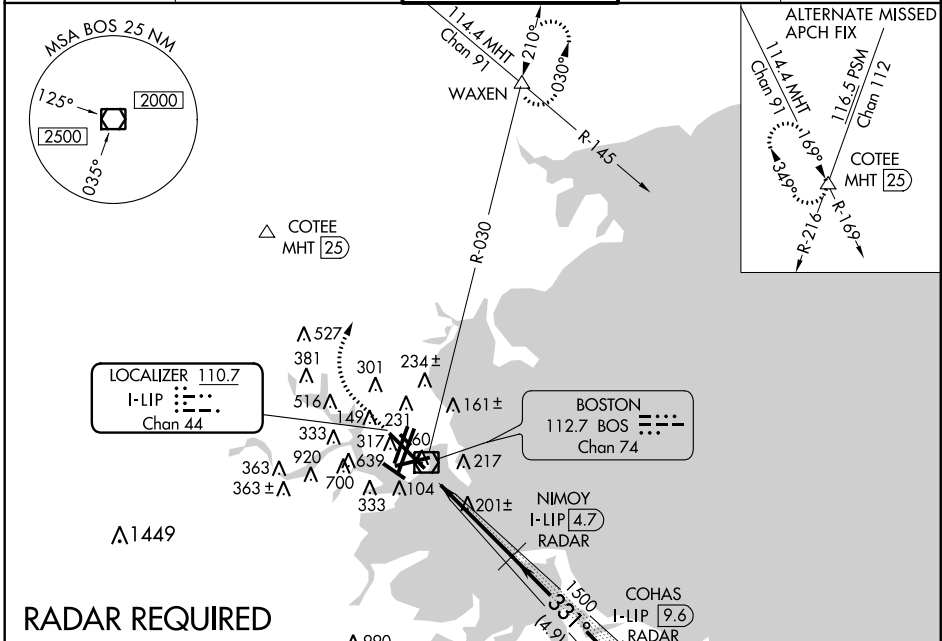
LOC/DME I-LIP <b>110.7</b> Chan <b>44</b>	APP CRS <b>331°</b>	Rwy Idg <b>10083</b> THRE <b>15</b> Apt Elev <b>20</b>
---	------------------------	--

# ILS RWY 33L (SA CAT I)

BOSTON/GENERAL EDWARD LAWRENCE LOGAN INTL (BOS)

Requires specific OPSEC, MSPEC, or LOA approval and use of HUD to DH. DME or radar required.	MALS R 	MISSED APPROACH: Climb to 1500 then climbing right turn to 3000 on BOS VOR/DME R-030 to WAXEN and hold.		

ATIS ARR <b>135.0</b> DEP <b>127.875</b>	BOSTON APP CON <b>120.6 263.1</b>	BOSTON TOWER <b>128.8 257.8</b>	GND CON <b>121.9</b>	CLNC DEL <b>121.65 257.8</b>
--	--------------------------------------	------------------------------------	-------------------------	---------------------------------



NE-1, 07 FEB 2013 to 07 MAR 2013

NE-1, 07 FEB 2013 to 07 MAR 2013

## RADAR REQUIRED

ELEV 20	<b>D</b>	THRE 15
---------	----------	---------

