

(NARRATIVE ON FOLLOWING PAGE)

ATIS DEP 127.875
 CLNC DEL 121.65 257.8
 GND CON 121.9
 BOSTON TOWER 128.8 257.8
 BOSTON DEP CON 133.0 343.6

TAKEOFF MINIMUMS:

Rwys 4L, 14, 15L, 27,32, 33L, 33R: NA - ATC.

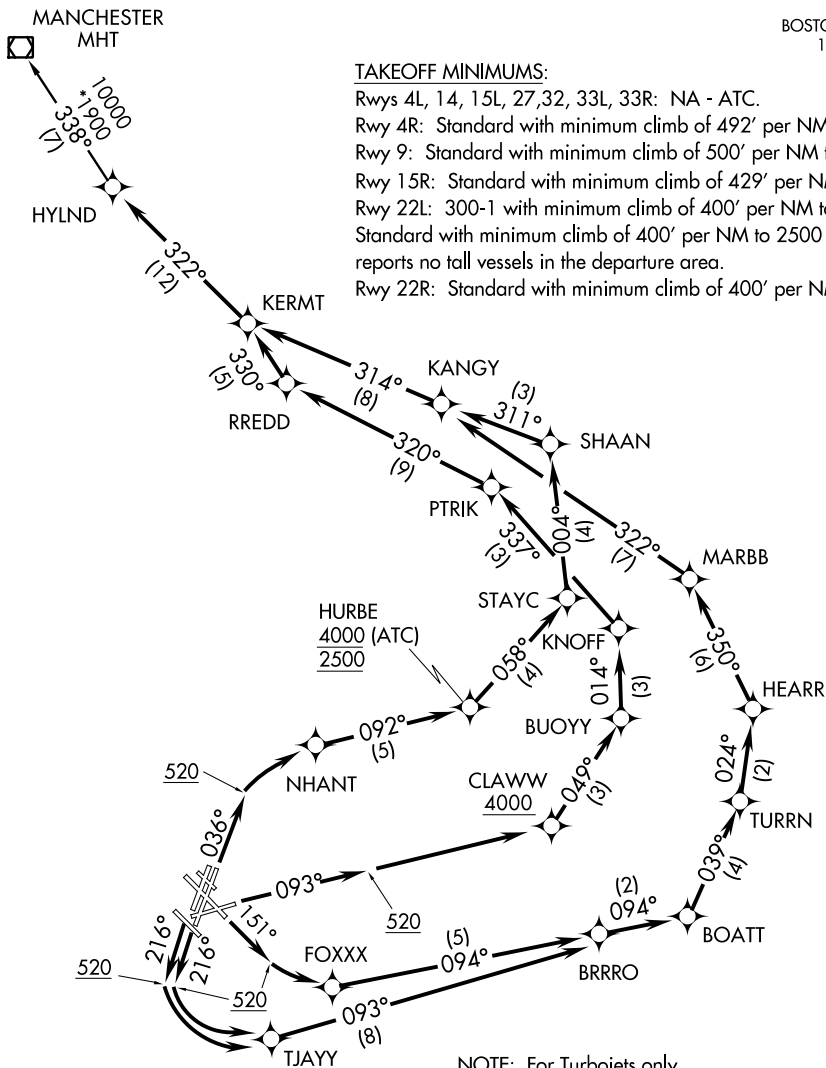
Rwy 4R: Standard with minimum climb of 492' per NM to 4000.

Rwy 9: Standard with minimum climb of 500' per NM to 4000.

Rwy 15R: Standard with minimum climb of 429' per NM to 3300.

Rwy 22L: 300-1 with minimum climb of 400' per NM to 2500 or Standard with minimum climb of 400' per NM to 2500 if Tower reports no tall vessels in the departure area.

Rwy 22R: Standard with minimum climb of 400' per NM to 2500.



- NOTE: DME/DME/IRU or GPS Required.
- NOTE: Radar Required for non-GPS equipped aircraft.
- NOTE: RNAV 1.
- NOTE: Chart not to scale.

- NOTE: For Turbojets only.
- NOTE: Departure HDG/RNAV tracks/vectors are predicated on avoiding noise sensitive areas. Flight crew awareness and compliance is important in minimizing noise impacts on surrounding communities.

NE-1, 07 FEB 2013 to 07 MAR 2013

NE-1, 07 FEB 2013 to 07 MAR 2013