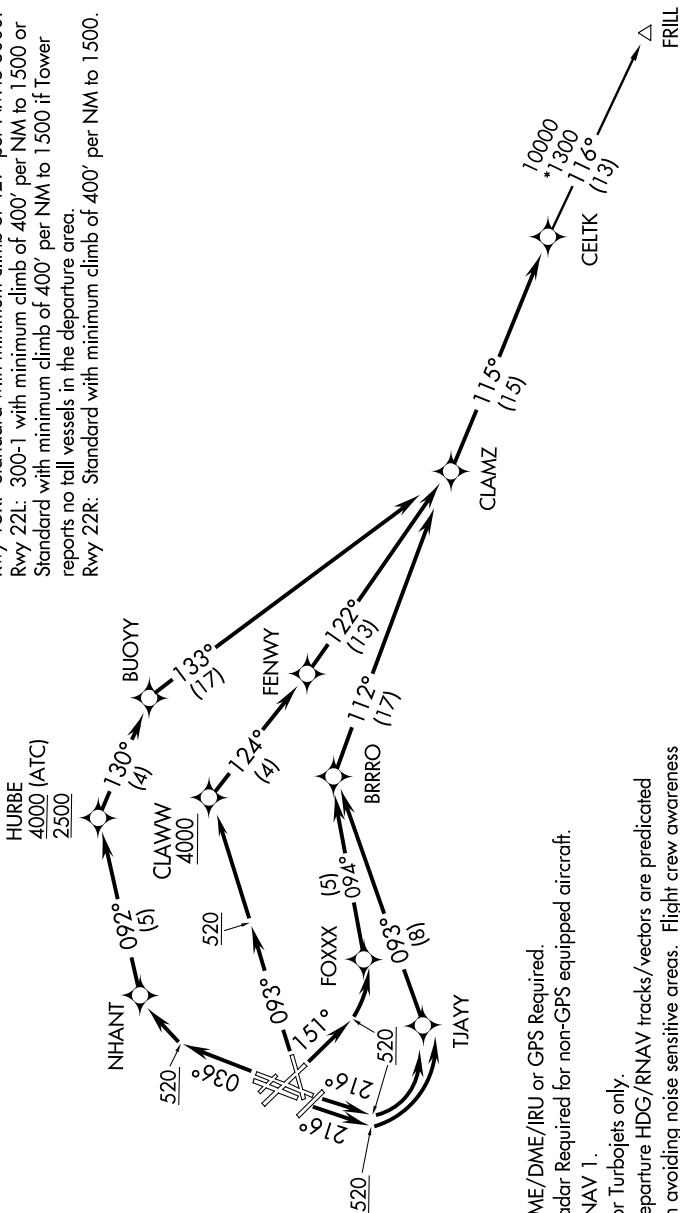


NE-1, 07 FEB 2013 to 07 MAR 2013

ATIS DEP 127.875  
CLNC DEL 121.65 257.8  
GND CON 121.9  
BOSTON TOWER 128.8 257.8  
BOSTON DEP CON 133.0 343.6

TAKEOFF MINIMUMS:

Rwys 4L, 14, 15L, 27, 32, 33L, 33R: NA-ATC.  
Rwy 4R: Standard with minimum climb of 492' per NM to 2000, then ATC climb of 381' per NM to 4000.  
Rwy 9: Standard with minimum climb of 500' per NM to 4000.  
Rwy 15R: Standard with minimum climb of 429' per NM to 3000.  
Rwy 22L: 300-1 with minimum climb of 400' per NM to 1500 or Standard with minimum climb of 400' per NM to 1500 if Tower reports no tall vessels in the departure area.  
Rwy 22R: Standard with minimum climb of 400' per NM to 1500.



(NARRATIVE ON FOLLOWING PAGE)

NOTE: Chart not to scale.

NE-1, 07 FEB 2013 to 07 MAR 2013