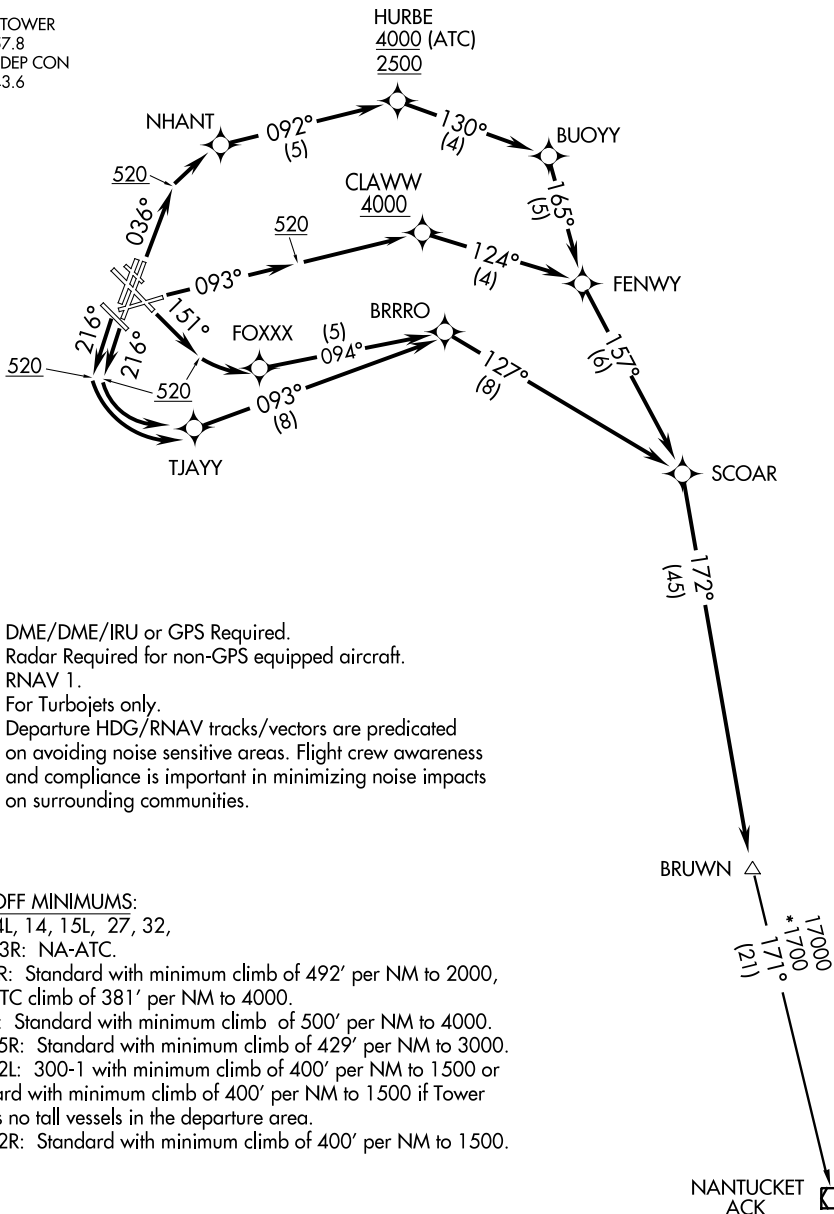


ATIS DEP 127.875  
CLNC DEL  
121.65 257.8  
GND CON  
121.9  
BOSTON TOWER  
128.8 257.8  
BOSTON DEP CON  
133.0 343.6



NOTE: DME/DME/IRU or GPS Required.  
 NOTE: Radar Required for non-GPS equipped aircraft.  
 NOTE: RNAV 1.  
 NOTE: For Turbojets only.  
 NOTE: Departure HDG/RNAV tracks/vectors are predicated on avoiding noise sensitive areas. Flight crew awareness and compliance is important in minimizing noise impacts on surrounding communities.

TAKEOFF MINIMUMS:

Rwys 4L, 14, 15L, 27, 32, 33L, 33R: NA-ATC.  
 Rwy 4R: Standard with minimum climb of 492' per NM to 2000, then ATC climb of 381' per NM to 4000.  
 Rwy 9: Standard with minimum climb of 500' per NM to 4000.  
 Rwy 15R: Standard with minimum climb of 429' per NM to 3000.  
 Rwy 22L: 300-1 with minimum climb of 400' per NM to 1500 or Standard with minimum climb of 400' per NM to 1500 if Tower reports no tall vessels in the departure area.  
 Rwy 22R: Standard with minimum climb of 400' per NM to 1500.

(NARRATIVE ON FOLLOWING PAGE)

NOTE: Chart not to scale.

NE-1, 07 FEB 2013 to 07 MAR 2013

NE-1, 07 FEB 2013 to 07 MAR 2013