

BLZZR ONE DEPARTURE (RNAV)

SL-58 (FAA)

BOSTON, MASSACHUSETTS

NE-1, 07 FEB 2013 to 07 MAR 2013

NOTE: DME/DME/IRU or GPS required.
 NOTE: RNAV 1.
 NOTE: For Turbojets only.
 NOTE: Radar required for non-GPS equipped aircraft.

NOTE: Do not exceed 250K until passing HEWMO.
 Departure hdg/RNAV tracks/vectors are predicated on avoiding noise sensitive areas. Flight crew awareness and compliance is important in minimizing noise impacts on surrounding communities.

ATIS DEP 127.875
 CLNC DEL 121.65 257.8
 GND CON 121.9
 BOSTON TOWER 128.8 257.8
 BOSTON DEP CON 133.0 343.6

TAKEOFF MINIMUMS:

Rwys 4L, 14, 15L, 27, 32, 33L, 33R: NA-ATC.
 Rwy 4R: Standard with minimum climb of 268' per NM to 5000.
 ATC climb of 430' per NM to 4000.
 Rwy 9: Standard with minimum climb of 313' per NM to 4700.
 ATC climb of 500' per NM to 4000.
 Rwy 15R: Standard with minimum climb of 400' per NM to 1100.
 Rwy 22L: 300-1 with minimum climb of 400' per NM to 520 or standard with minimum climb of 400' per NM to 520 if tower reports no tall vessels in the departure area.
 Rwy 22R: Standard with minimum climb of 400' per NM to 520.

(NARRATIVE ON FOLLOWING PAGE)

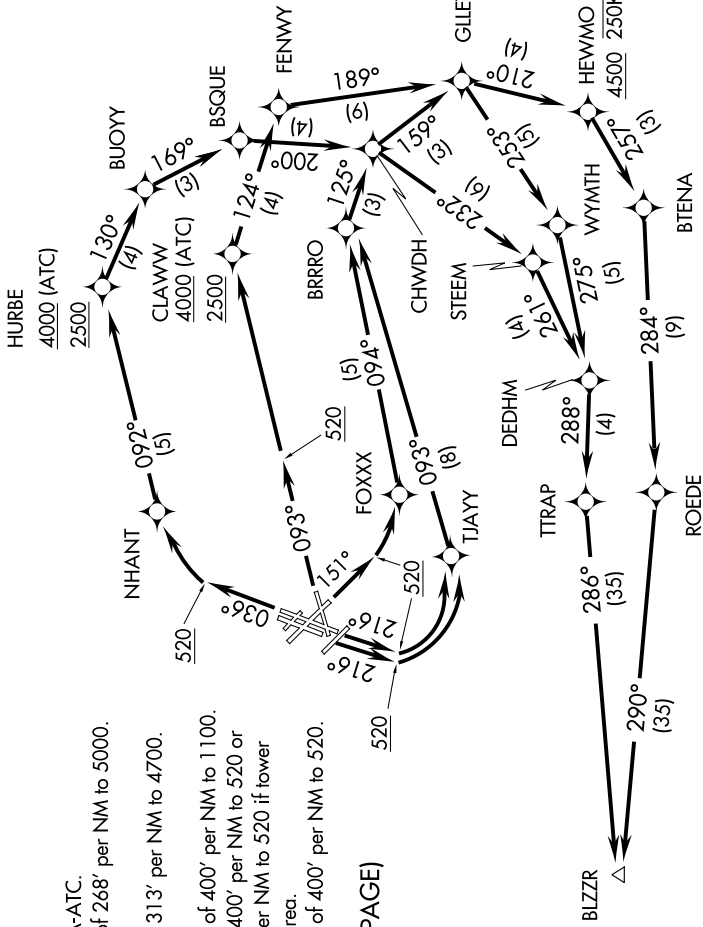
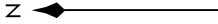
CHESTER CTR

BARNES BAF

BLZZR

ONEPS

NELLIE



NOTE: Chart not to scale.

NE-1, 07 FEB 2013 to 07 MAR 2013