

BOISE, IDAHO

AL-57 (FAA)

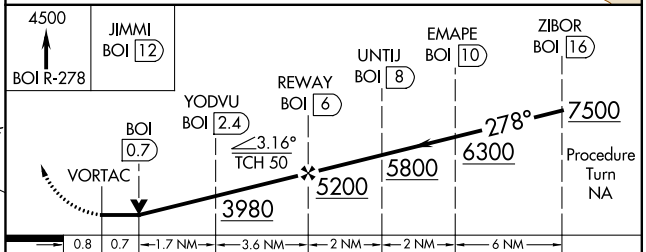
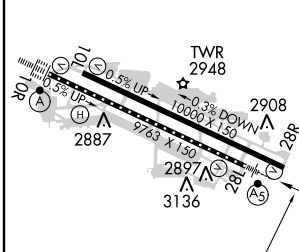
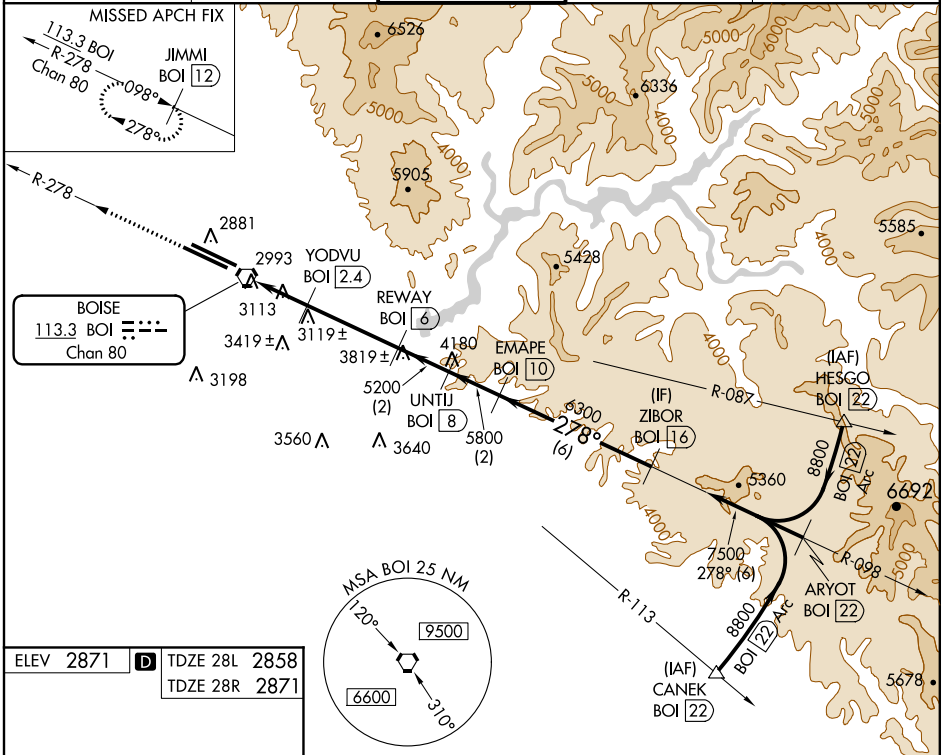
VOR/DME or 13010
TACAN RWY 28L

BOISE AIR TERMINAL (GOWEN FIELD) (BOI)

VORTAC BOI 113.3 Chan 80	APP CRS 278°	Rwy Idg 28L TDZE 2858 Apt Elev 2871	Rwy Idg 28R TDZE 2871 Apt Elev 2871
---------------------------------------	------------------------	---	---

<p>⚠ Circling NA north of Rwy 10L-28R. For inoperative MALS R increase S-28L Cat E visibility ½ mile.</p>	<p>MALS Rwy 28L</p> 	<p>MISSED APPROACH: Climb to 4500 via BOI VORTAC R-278 to JIMMI/12 DME and hold.</p>
--	---	--

ATIS 123.9 290.4	BOISE APP CON 119.6 269.4	BOISE TOWER 118.1 257.8	GND CON 121.7 348.6	CLNC DEL 125.9 323.2
----------------------------	-------------------------------------	-----------------------------------	-------------------------------	--------------------------------



CATEGORY	A	B	C	D	E
S-28L	3380/24	522 (600-½)	3380/50 522 (600-1)	3380/60	522 (600-1¼)
SIDESTEP RWY 28R	3380/60	509 (600-1¼)	3380-1¾ 509 (600-1¾)	3380-2¼	509 (600-2¼)
CIRCLING	3440-1	569 (600-1)	3440-1½ 569 (600-1½)	3440-2	3820-3 949 (1000-3)

BOISE, IDAHO
Amdt 2 11FEB10

43°34'N-116°13'W

BOISE AIR TERMINAL (GOWEN FIELD) (BOI)
VOR/DME or TACAN RWY 28L

NW-1, 07 FEB 2013 to 07 MAR 2013

NW-1, 07 FEB 2013 to 07 MAR 2013