

VORTAC BOI <b>113.3</b> Chan <b>80</b>	APP CRS <b>101°</b>	Rwy Idg THRE Apt Elev <b>10000</b> <b>2831</b> <b>2871</b>
--	------------------------	---

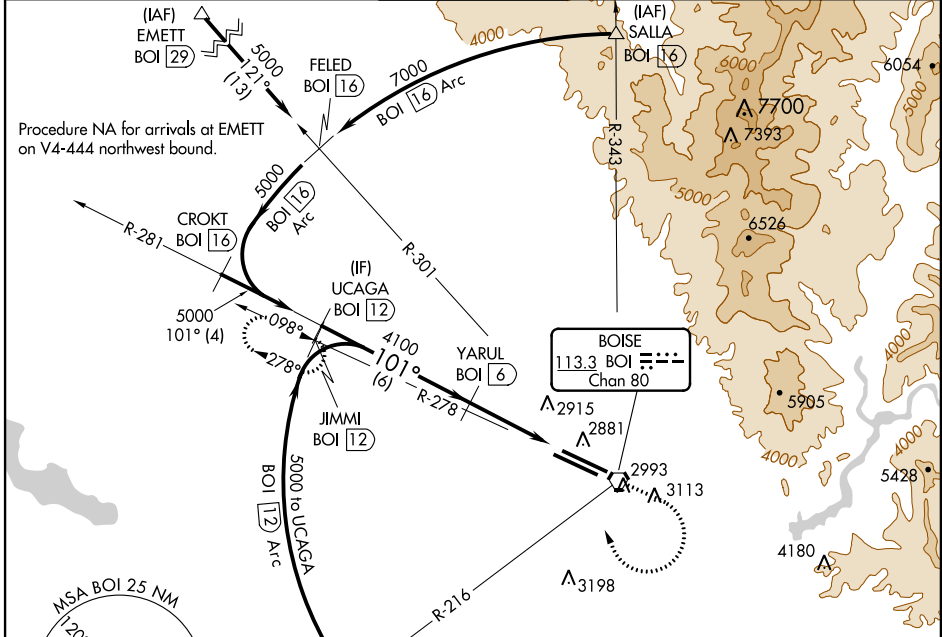
# VOR/DME or TACAN RWY 10L

BOISE AIR TERMINAL (GOWEN FIELD) (BOI)

**⚠** Circling NA north of Rwy 10L-28R.  
**⚠** Visibility reduction by helicopters NA.

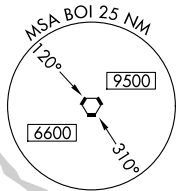
MISSED APPROACH: Climb to 3700 then climbing right turn to 5000 on heading 320° and BOI VORTAC R-278 to JIMMI/BOI 12 DME and hold.

ATIS <b>123.9 290.4</b>	BOISE APP CON <b>119.6 269.4</b>	BOISE TOWER <b>118.1 257.8</b>	GND CON <b>121.7 348.6</b>	CLNC DEL <b>125.9 323.2</b>
----------------------------	-------------------------------------	-----------------------------------	-------------------------------	--------------------------------

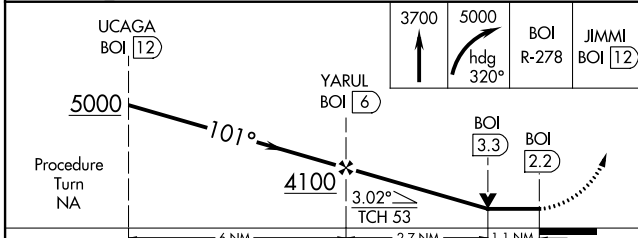
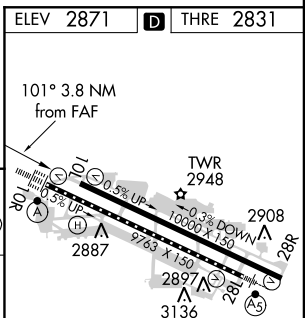


NW-1, 07 FEB 2013 to 07 MAR 2013

NW-1, 07 FEB 2013 to 07 MAR 2013



ELEV 2871	<b>D</b> THRE 2831
-----------	--------------------



CATEGORY	A	B	C	D	E
S-10L	3240-1	409 (400-1)	3240-1½ 409 (400-1½)		
CIRCLING	3440-1	569 (600-1)	3440-1½ 569 (600-1½)	3440-2 569 (600-2)	3860-3 989 (1000-3)

REIL Rwy 10L  
 TDZ/CL Rws 10R and 28L  
 HIRL Rws 10L-28R and 10R-28L