

BOISE, IDAHO

AL-57 (FAA)

# RNAV (GPS) Y RWY 28R

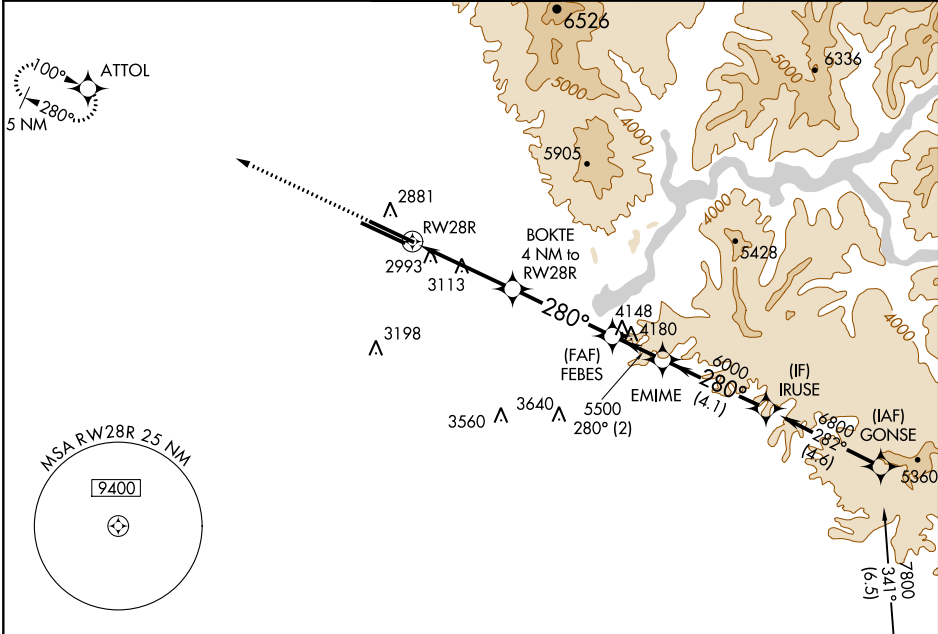
BOISE AIR TERMINAL (GOWEN FIELD) (BOI)

WAAS CH <b>65803</b> <b>W28B</b>	APP CRS <b>280°</b>	Rwy Idg <b>10000</b> TDZE <b>2871</b> Apt Elev <b>2871</b>
--	------------------------	--

▼ For uncompensated Baro-VNAV systems, LNAV/VNAV NA below -20°C (-4°F) or above 43°C (109°F). DME/DME RNP-0.3 NA. Circling NA north of Rwy 10L-28R.

MISSED APPROACH: Climb to 6000 direct ATTOL and hold, continue climb-in-hold to 6000.

ATIS <b>123.9 290.4</b>	BOISE APP CON <b>119.6 269.4</b>	BOISE TOWER <b>118.1 257.8</b>	GND CON <b>121.7 348.6</b>	CLNC DEL <b>125.9 323.2</b>
----------------------------	-------------------------------------	-----------------------------------	-------------------------------	--------------------------------

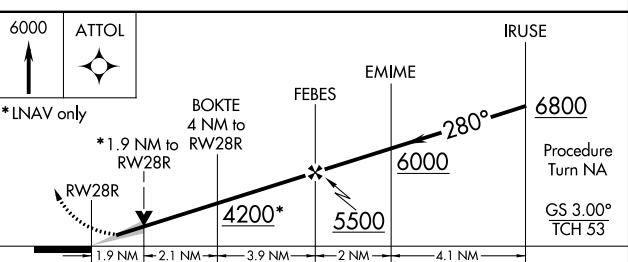
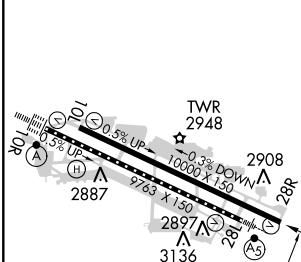


NW-1, 07 FEB 2013 to 07 MAR 2013

NW-1, 07 FEB 2013 to 07 MAR 2013

ELEV 2871	<b>D</b>	TDZE 2871
-----------	----------	-----------

Procedure NA for arrivals at CANEK via V4-253-330 southeast bound.



CATEGORY	A	B	C	D
LPV DA	3147/50 276 (300-1)			
LNAV/VNAV DA	3271-1½ 400 (400-1½)			
LNAV MDA	3520/50	649 (700-1)	3520-1¾ 649 (700-1¾)	3520-2 649 (700-2)
CIRCLING	3520-1	649 (700-1)	3520-1¾ 649 (700-1¾)	3520-2 649 (700-2)

REIL Rwy 10L  
TDZ/CL Rwy 10R and 28L  
HIRL Rwy 10L-28R and 10R-28L

BOISE, IDAHO  
Amdt 3 13010

43°34'N-116°13'W

# BOISE AIR TERMINAL (GOWEN FIELD) (BOI)

## RNAV (GPS) Y RWY 28R