

RNAV (GPS) Y RWY 10L BOISE AIR TERMINAL (GOWEN FIELD) (BOI)

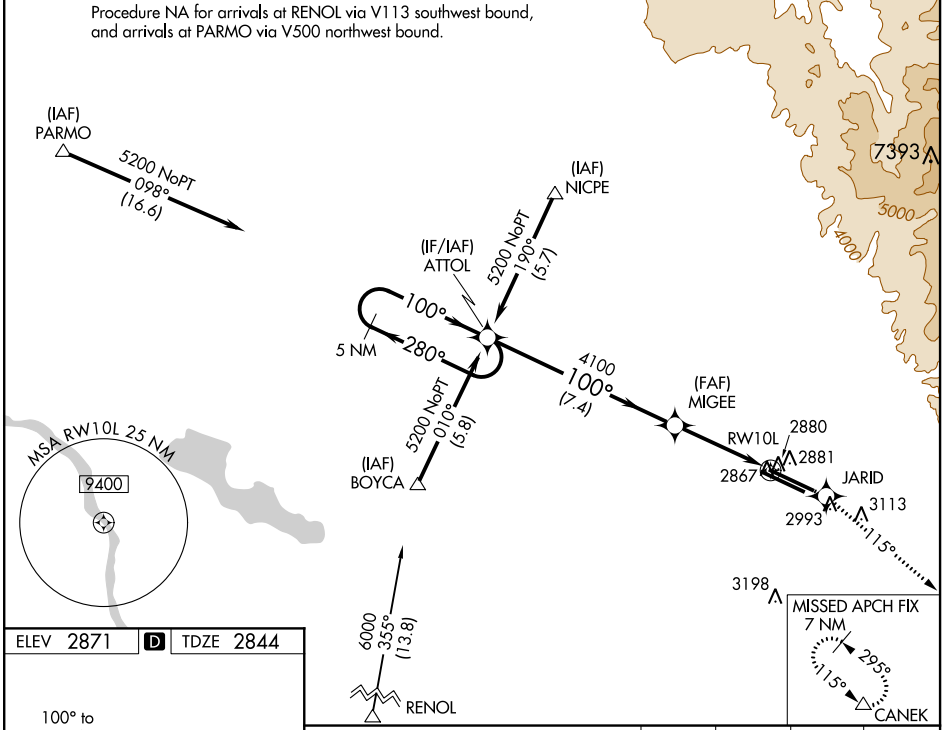
WAAS CH 78102 W10A	APP CRS 100°	Rwy Idg 10000 TDZE 2844 Apt Elev 2871
--	------------------------	--

▼ For uncompensated Baro-VNAV systems, LNAV/VNAV NA below -20°C (-4°F) or above 42°C (108°F).
Circling NA north of Rwys 10L and 28R. DME/DME RNP-0.3 NA.
Visibility reduction by helicopters NA.

MISSED APPROACH: Climb to 7200 direct JARID and via track 115° to CANEK and hold.

ATIS 123.9 290.4	BOISE APP CON 119.6 269.4	BOISE TOWER 118.1 257.8	GND CON 121.7 348.6	CLNC DEL 125.9 323.2
----------------------------	-------------------------------------	-----------------------------------	-------------------------------	--------------------------------

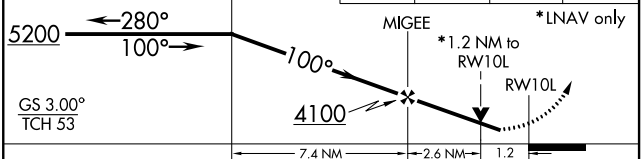
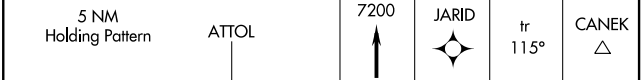
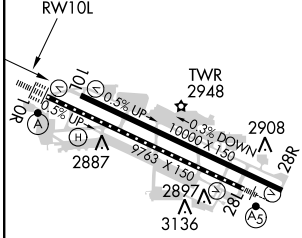
Procedure NA for arrivals at RENOL via V113 southwest bound, and arrivals at PARMO via V500 northwest bound.



NW-1, 07 FEB 2013 to 07 MAR 2013

NW-1, 07 FEB 2013 to 07 MAR 2013

ELEV 2871	D	TDZE 2844
-----------	----------	-----------



CATEGORY	A	B	C	D
LPV DA		3094-1	250 (300-1)	
LNAV/VNAV DA		3173-1¼	329 (400-1¼)	
LNAV MDA	3280-1	436 (500-1)	3280-1¼ 436 (500-1¼)	3280-1½ 436 (500-1½)
CIRCLING	3440-1	569 (600-1)	3440-1½ 569 (600-1½)	3440-2 569 (600-2)

REIL Rwy 10L
TDZ/CL Rws 10R and 28L
HIRL Rws 10L-28R and 10R-28L