

RNAV (RNP) Z RWY 28R

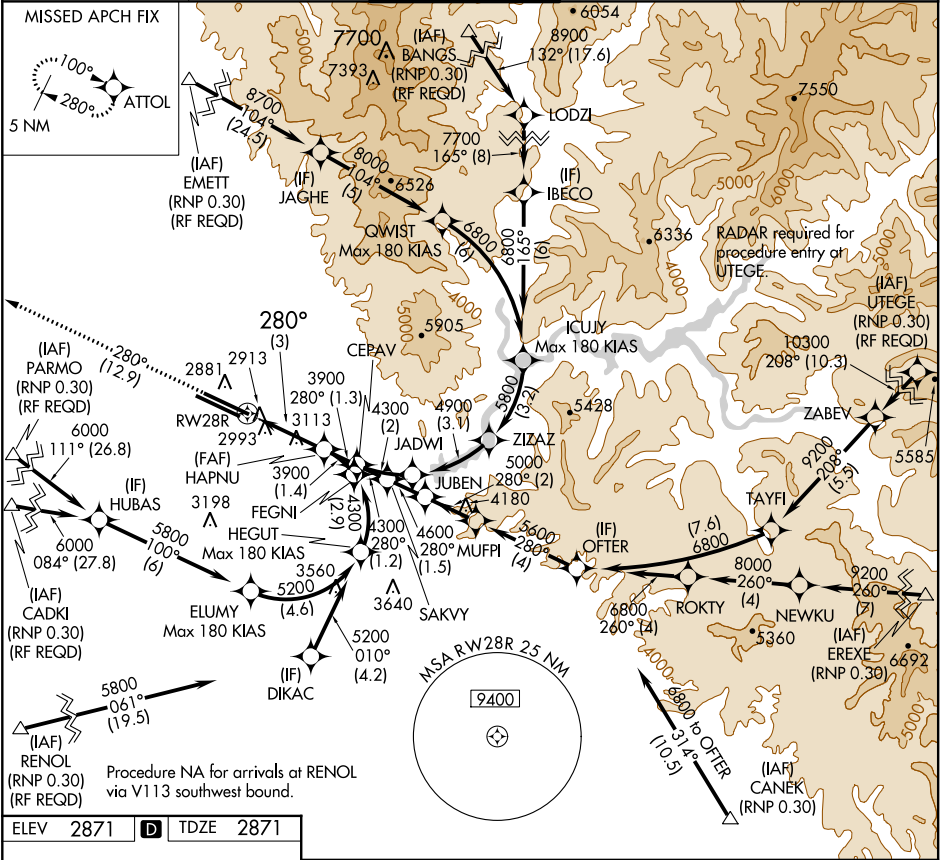
BOISE AIR TERMINAL (GOWEN FIELD) (BOI)

APP CRS	Rwy Idg	10000
280°	TDZE	2871
	Apt Elev	2871

GPS required. For uncompensated Baro-VNAV systems, procedure NA below -14°C (7°F) or above 42°C (107°F).

MISSED APPROACH: Climb to 6000 via track 280° to ATTOL and hold, continue climb-in-hold to 6000.

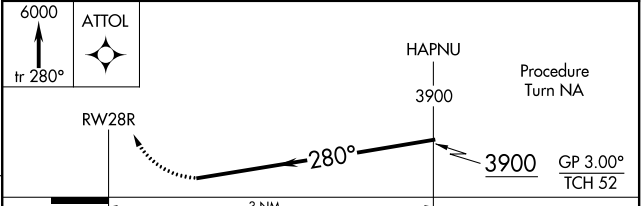
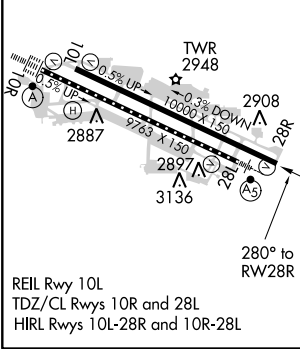
ATIS 123.9 290.4	BOISE APP CON 119.6 269.4	BOISE TOWER 118.1 257.8	GND CON 121.7 348.6	CLNC DEL 125.9 323.2
----------------------------	-------------------------------------	-----------------------------------	-------------------------------	--------------------------------



NW-1, 07 FEB 2013 to 07 MAR 2013

NW-1, 07 FEB 2013 to 07 MAR 2013

ELEV	2871	D	TDZE	2871
------	-------------	----------	------	-------------



CATEGORY	A		B		C		D	
	RNP 0.15 DA	3204/60		333 (400-1¼)				
RNP 0.30 DA	3304-1½		433 (500-1½)					

AUTHORIZATION REQUIRED