


APP CRS	Rwy Idg	9763
280°	TDZE	2858
	Apt Elev	2871

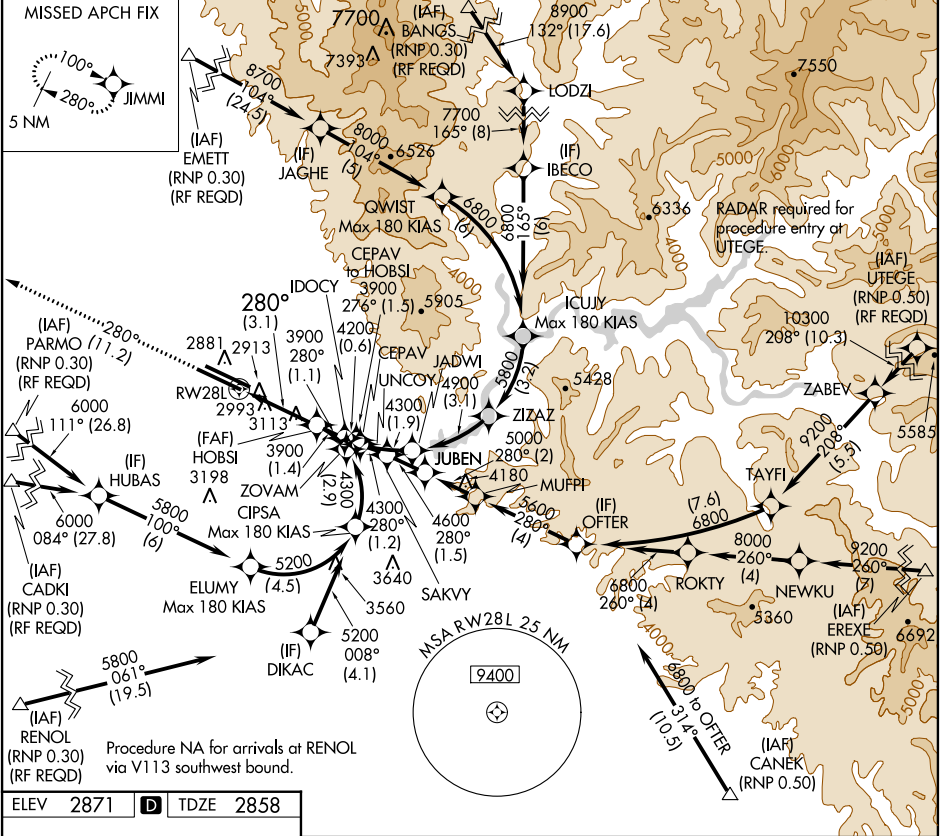
RNAV (RNP) Z RWY 28L

BOISE AIR TERMINAL (GOWEN FIELD) (BOI)

GPS required. For uncompensated Baro-VNAV systems, procedure NA below -14°C (7°F) or above 42°C (107°F). For inoperative MALSR increase RNP 0.15 and RNP 0.25 visibility to RVR 6000, and RNP 0.30 to 1½.

MALSR  MISSED APPROACH: Climb to 6000 via track 280° to JIMMI and hold, continue climb-in-hold to 6000.

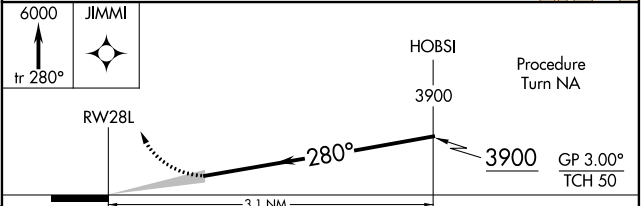
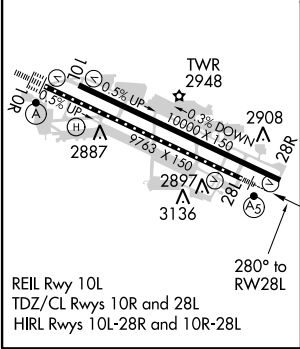
ATIS 123.9 290.4	BOISE APP CON 119.6 269.4	BOISE TOWER 118.1 257.8	GND CON 121.7 348.6	CLNC DEL 125.9 323.2
----------------------------	-------------------------------------	-----------------------------------	-------------------------------	--------------------------------



NW-1, 07 FEB 2013 to 07 MAR 2013

NW-1, 07 FEB 2013 to 07 MAR 2013

ELEV 2871	D	TDZE 2858
-----------	----------	-----------



CATEGORY	A	B	C	D
RNP 0.15 DA		3228/40	370 (400-¾)	
RNP 0.25 DA		3250/50	392 (400-1)	
RNP 0.30 DA		3315/60	457 (500-1½)	

AUTHORIZATION REQUIRED