

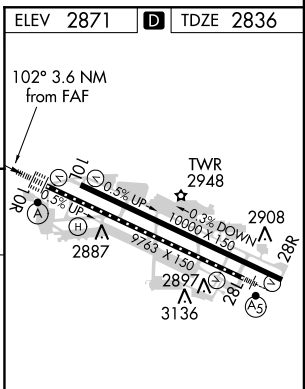
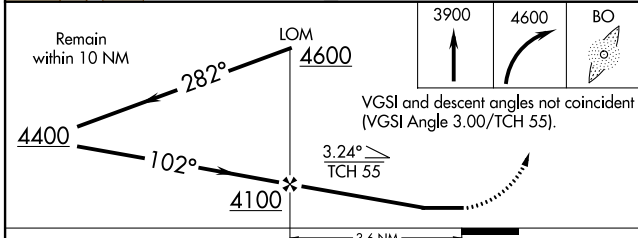
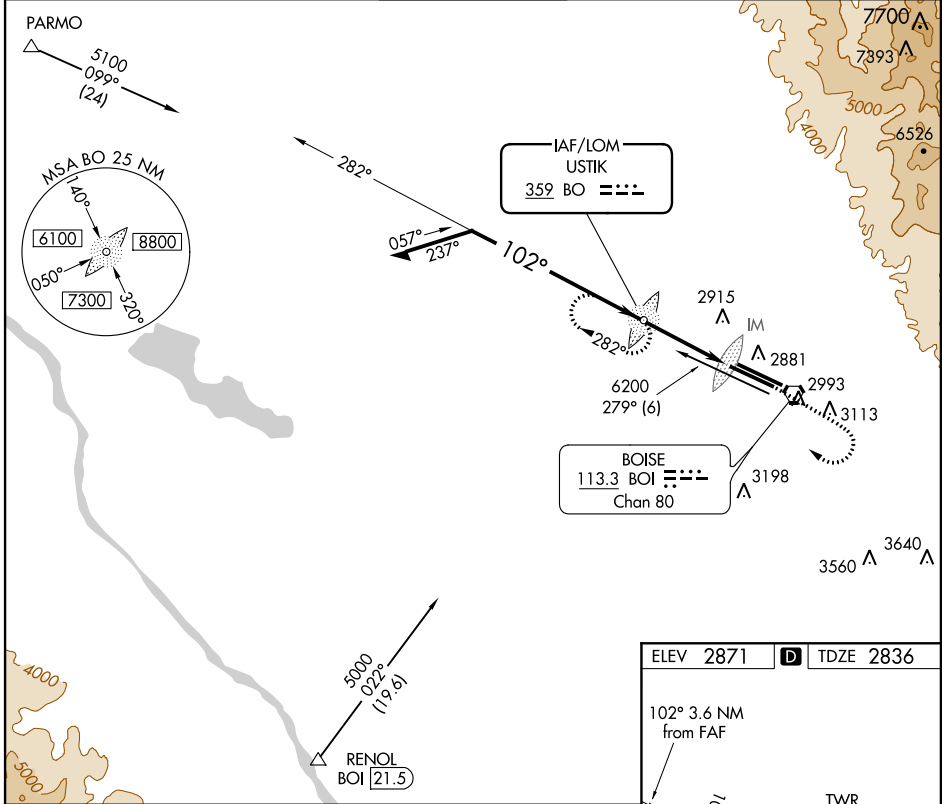
BO LOM <b>359</b>	APP CRS <b>102°</b>	Rwy Idg TDZE Apt Elev	<b>9763</b> <b>2836</b> <b>2871</b>
----------------------	------------------------	-----------------------------	---

# NDB RWY 10R

BOISE AIR TERMINAL (GOWEN FIELD) (BOI)

▼ Circling NA north of Rwy 10L-28R.
 ALSIF-2
MISSED APPROACH: Climb to 3900 then climbing right turn to 4600 direct BO LOM and hold.

ATIS <b>123.9 290.4</b>	BOISE APP CON <b>119.6 269.4</b>	BOISE TOWER <b>118.1 257.8</b>	GND CON <b>121.7 348.6</b>	CLNC DEL <b>125.9 323.2</b>
----------------------------	-------------------------------------	-----------------------------------	-------------------------------	--------------------------------



ELEV 2871	TDZE 2836
REIL Rwy 10L	
TDZ/CL Rws 10R and 28L	
HIRL Rws 10L-28R and 10R-28L	
FAF to MAP 3.6 NM	
Knots	60 90 120 150 180
Min:Sec	3:36 2:24 1:48 1:26 1:12

NW-1, 07 FEB 2013 to 07 MAR 2013

NW-1, 07 FEB 2013 to 07 MAR 2013