

LOC/DME I-BOI 111.1 Chan 48	APP CRS 280°	Rwy Idg TDZE 9763 2858	Apt Elev 2871
--	------------------------	--	-------------------------

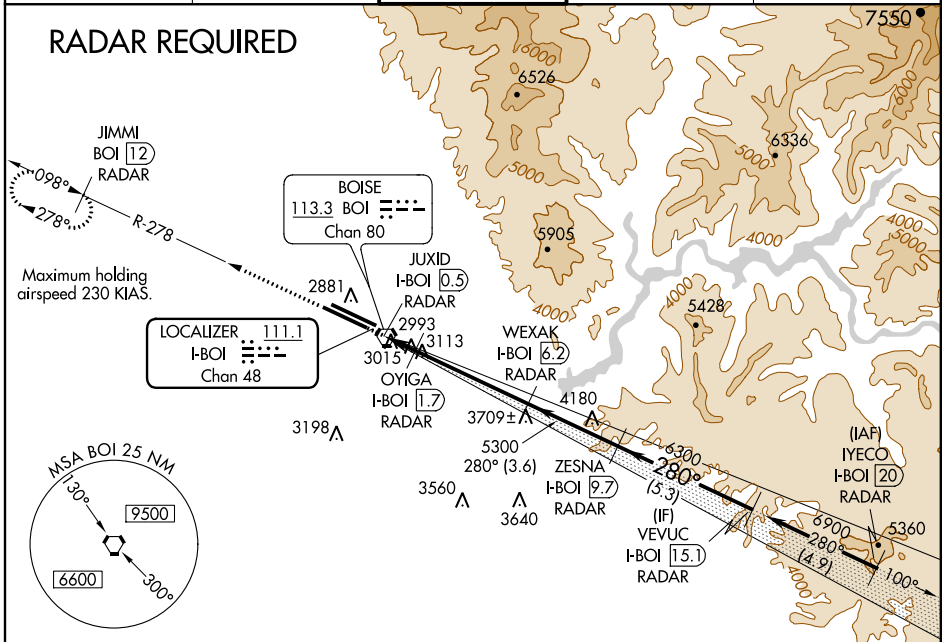
LOC BC RWY 28L

BOISE AIR TERMINAL (GOWEN FIELD) (BOI)

<p>⚠ For inoperative MALSR, increase S-28L Cat. E visibility to 1½.</p> <p>⚠ Circling NA north of Rwy 10L-28R. DME or RADAR required.</p>	<p>MALSR</p>	<p>MISSED APPROACH: Climb to 4500 via BOI VORTAC R-278 to JIMMI/12 DME/RADAR and hold.</p>
---	--------------	--

ATIS 123.9 290.4	BOISE APP CON 119.6 269.4	BOISE TOWER 118.1 257.8	GND CON 121.7 348.6	CLNC DEL 125.9 323.2
----------------------------	-------------------------------------	--	-------------------------------	--------------------------------

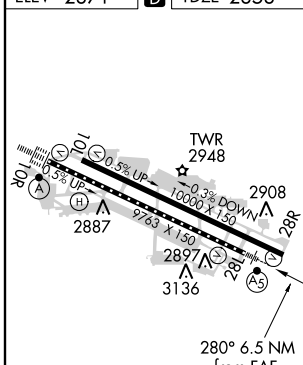
RADAR REQUIRED



NW-1, 07 FEB 2013 to 07 MAR 2013

NW-1, 07 FEB 2013 to 07 MAR 2013

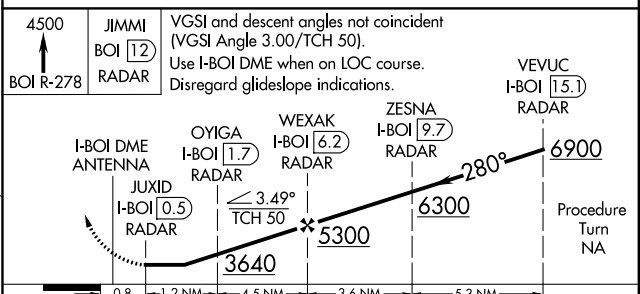
ELEV 2871	D	TDZE 2858
-----------	----------	-----------



REIL Rwy 10L
TDZ/CL Rwys 10R and 28L
HIRL Rwys 10L-28R and 10R-28L
FAF to MAP 5.7 NM

Knots	60	90	120	150	180
Min:Sec	5:42	3:48	2:51	2:17	1:54

BACK COURSE



	0.8	1.2 NM	4.5 NM	3.6 NM	5.3 NM	
CATEGORY	A	B	C	D	E	
S-28L	3300/24	442 (500-½)	3300/40 442 (500-¾)	3300/50	442 (500-1)	
CIRCLING	3440-1	569 (600-1)	3440-1½ 569 (600-1½)	3440-2	3860-3 989 (1000-3)	