

LOC/DME I-BOI 111.1 Chan 48	APP CRS 100°	Rwy Idg 10R 9763 TDZE 2836 Apt Elev 2871	Rwy Idg 10L 10000 TDZE 2844 Apt Elev 2871
---	------------------------	---	--

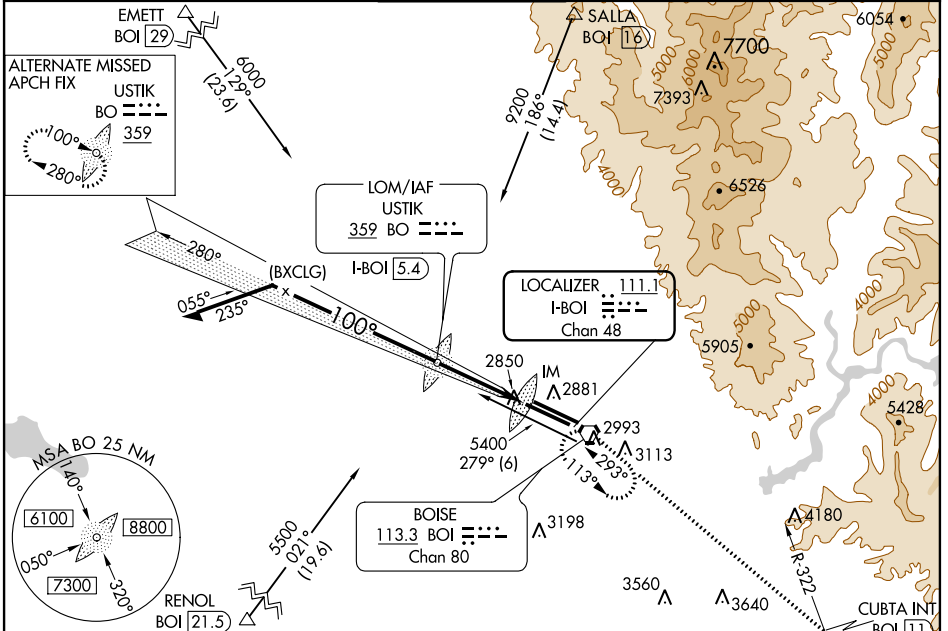
ILS or LOC RWY 10R

BOISE AIR TERMINAL (GOWEN FIELD) (BOI)

Circling NA north of Rwy 10L-28R.
 Visibility reduction by helicopters NA for sidestep.

MISSED APPROACH: Climb to 6000 via BOI VORTAC
 R-113 to CUBTA INT/BOI 11 DME, and right turn direct
 BOI VORTAC and hold.

ATIS 123.9 290.4	BOISE APP CON 119.6 269.4	BOISE TOWER 118.1 257.8	GND CON 121.7 348.6	CLNC DEL 125.9 323.2
----------------------------	-------------------------------------	-----------------------------------	-------------------------------	--------------------------------

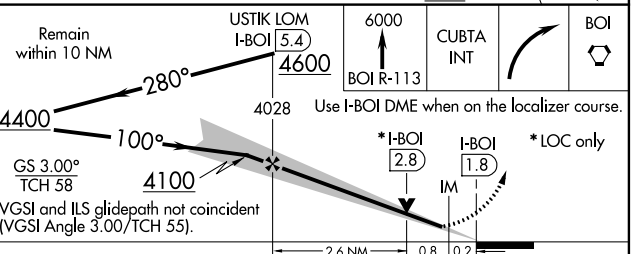
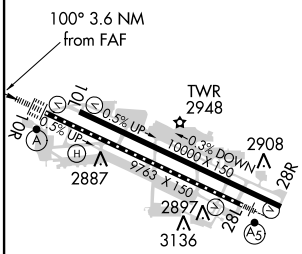


NW-1, 07 FEB 2013 to 07 MAR 2013

NW-1, 07 FEB 2013 to 07 MAR 2013

ELEV 2871	D TDZE 10R 2836
	TDZE 10L 2844

ADF or DME REQUIRED



REIL Rwy 10L				
TDZ/CL Rwys 10R and 28L				
HIRL Rwys 10L-28R and 10R-28L				
FAF to MAP 3.6 NM				
Knots	60	90	120	150
Min:Sec	3:36	2:24	1:48	1:26

CATEGORY	A	B	C	D
S-ILS 10R	3036/18 200 (200-½)			
S-LOC 10R	3200/24 364 (400-½)			3200/40 364 (400-¾)
SIDESTEP RWY 10L	3220-1	376 (400-1)	3220-1½ 376 (400-1½)	3220-2 376 (400-2)
CIRCLING	3440-1	569 (600-1)	3440-1½ 569 (600-1½)	3440-2 569 (600-2)