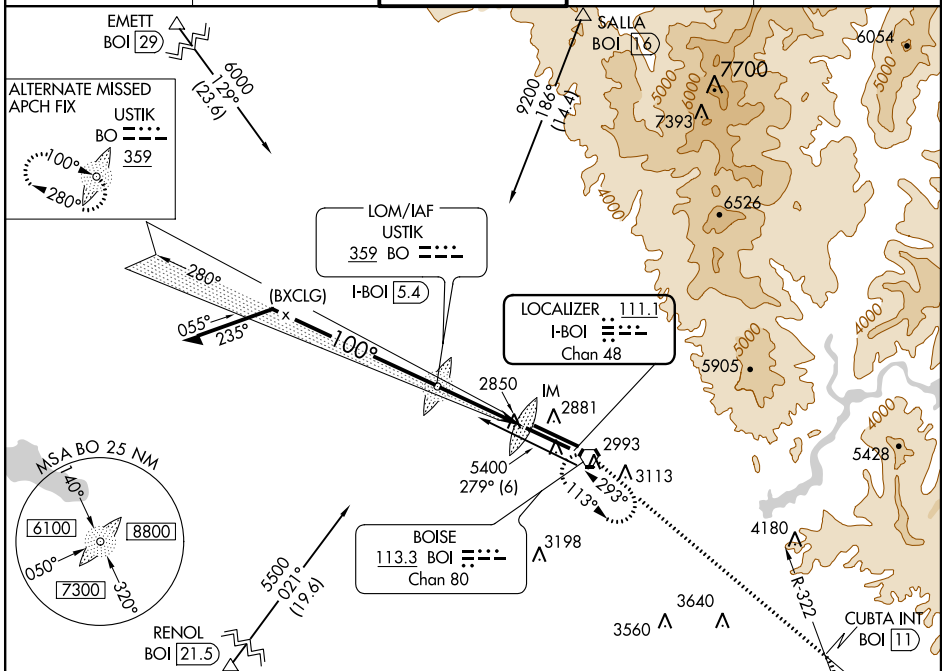


LOC/DME I-BOI 111.1 Chan 48	APP CRS 100°	Rwy ldg TDZE Apt Elev	9763 2836 2871
---	------------------------	-----------------------------	---

ILS RWY 10R (CAT III)

BOISE AIR TERMINAL (GOWEN FIELD) (BOI)

	MISSED APPROACH: Climb to 6000 via BOI VORTAC R-113 to CUBTA INT/BOI 11 DME, and right turn direct BOI VORTAC and hold.			
	ATIS 123.9 290.4	BOISE APP CON 119.6 269.4	BOISE TOWER 118.1 257.8	GND CON 121.7 348.6

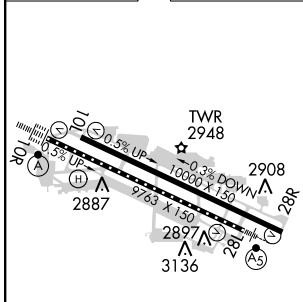


NW-1, 07 FEB 2013 to 07 MAR 2013

NW-1, 07 FEB 2013 to 07 MAR 2013

ELEV 2871	D	TDZE 2836
-----------	----------	-----------

ADF or DME REQUIRED



Remain within 10 NM

USTIK LOM I-BOI **5.4** **4600**

6000 CUBTA INT BOI

Use I-BOI DME when on the localizer course.

4400 280° 4028

700° 4100

GS 3.00° TCH 58

VGSI and ILS glidepath not coincident (VGSI Angle 3.00/TCH 55).

IM 2936

2836 MSL

3.4 NM 1028° 979°

CATEGORY	A	B	C	D
S-ILS 10R		CAT IIIa	RVR 07	
S-ILS 10R		CAT IIIb	RVR 06	
S-ILS 10R		CAT IIIc	NA	

CATEGORY III ILS - SPECIAL AIRCREW & AIRCRAFT CERTIFICATION REQUIRED

REIL Rwy 10L
TDZ/CL Rwys 10R and 28L
HIRL Rwys 10L-28R and 10R-28L