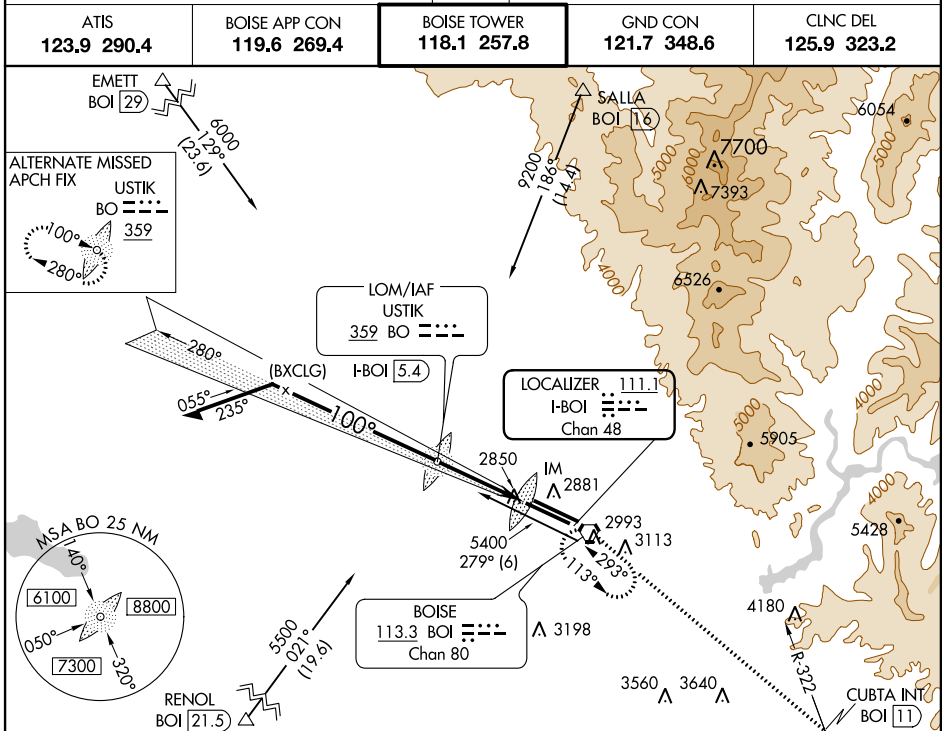


LOC/DME I-BOI 111.1 Chan 48	APP CRS 100°	Rwy Idg TDZE Apt Elev	9763 2836 2871
-------------------------------------------------	------------------------	-----------------------------	-------------------------------------------

ILS RWY 10R (CAT II)

BOISE AIR TERMINAL (GOWEN FIELD) (BOI)

	MISSED APPROACH: Climb to 6000 via BOI VORTAC R-113 to CUBTA INT/BOI 11 DME, and right turn direct BOI VORTAC and hold.			
	ATIS 123.9 290.4	BOISE APP CON 119.6 269.4	BOISE TOWER 118.1 257.8	GND CON 121.7 348.6

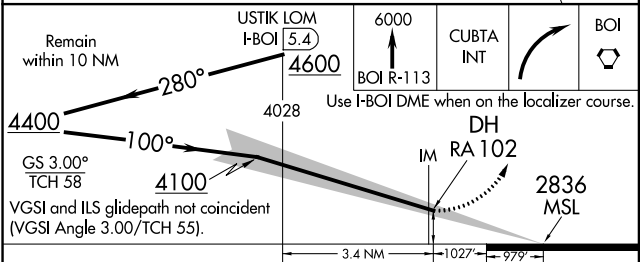
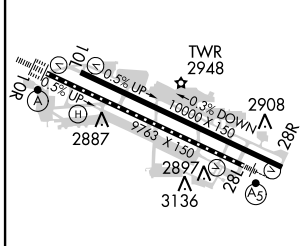


NW-1, 07 FEB 2013 to 07 MAR 2013

NW-1, 07 FEB 2013 to 07 MAR 2013

ELEV 2871	D	TDZE 2836
-----------	----------	-----------

ADF or DME REQUIRED



CATEGORY	A	B	C	D
S-ILS 10R		RA 102/12	100	DA 2936

CATEGORY II ILS - SPECIAL AIRCREW & AIRCRAFT CERTIFICATION REQUIRED

REIL Rwy 10L
TDZ/CL Rwys 10R and 28L
HIRL Rwys 10L-28R and 10R-28L