

BOISE, IDAHO

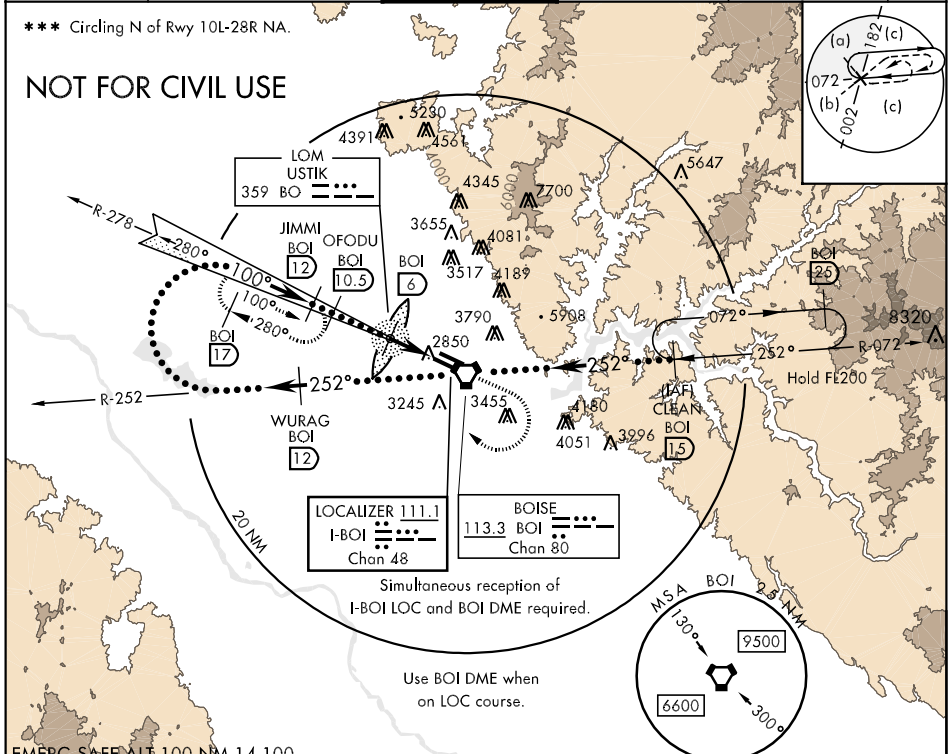
HI-ILS or LOC/DME RWY 10R

LOC I-BOI 111.1	APCH CRS 100°	Rwy Idg TDZE Arpt Elev 9763 2836 2871	JAL-57 [USAF]	BOISE AIR TERMINAL (GOWEN FLD) (KBOI)
---------------------------	-------------------------	---	---------------	---------------------------------------

▲ * When ALS inop, increase RVR to 40 and vis to 3/4 mile.
****** When ALS inop, increase CAT CD RVR to 50 and vis to 1 mile, CAT E RVR to 60 and vis to 1 1/4 miles.

▲ ALSF-2 MISSED APPROACH: Climb to 3700 then climbing right turn to 5000 via heading 320° to intercept BOI VORTAC R-278 then direct JIMMI INT and hold.

ATIS 123.9 290.4	BOISE APP CON 119.6 269.4	BOISE TOWER 118.1 257.8	GND CON 121.7 348.6	CLNC DEL 125.9 323.2	ASOS
----------------------------	-------------------------------------	-----------------------------------	-------------------------------	--------------------------------	------



NW-1, 07 FEB 2013 to 07 MAR 2013

NW-1, 07 FEB 2013 to 07 MAR 2013

3700 5000 hdg 320° JIMMI BOI 12 WURAG BOI R-252 12 VGSIs and descent angles not coincident Right at 12,000 within 25 NM of BOI VORTAC GS 3.00° TCH 58 5900 5500 4100 3.3 NM 0.3	CLEAN R-072 BOI 15 ELEV 2871 100° 3.6 NM from FAF HIRL Rwy 10L-28R and 10R-28L REIL Rwy 10L TWR 2925 2908 2887 2897 3136 TDZL/CL Rwy 10R-28L FAF to MAP 3.3 NM Knots 120 140 160 180 200 Min:Sec 1:39 1:25 1:14 1:06 0:59																
<table border="1"> <tr> <th>CATEGORY</th> <th>C</th> <th>D</th> <th>E</th> </tr> <tr> <td>S-ILS 10R *</td> <td>3036/24</td> <td>200</td> <td>(200-1/2)</td> </tr> <tr> <td>S-LOC 10R **</td> <td>3160/24 324 (400-1/2)</td> <td>3160/40 324</td> <td>(400-3/4)</td> </tr> <tr> <td>CIRCLING ***</td> <td>3440-1 1/2 569 (600-1 1/2)</td> <td>3440-2 569 (600-2)</td> <td>3820-3 949 (1000-3)</td> </tr> </table>	CATEGORY	C	D	E	S-ILS 10R *	3036/24	200	(200-1/2)	S-LOC 10R **	3160/24 324 (400-1/2)	3160/40 324	(400-3/4)	CIRCLING ***	3440-1 1/2 569 (600-1 1/2)	3440-2 569 (600-2)	3820-3 949 (1000-3)	
CATEGORY	C	D	E														
S-ILS 10R *	3036/24	200	(200-1/2)														
S-LOC 10R **	3160/24 324 (400-1/2)	3160/40 324	(400-3/4)														
CIRCLING ***	3440-1 1/2 569 (600-1 1/2)	3440-2 569 (600-2)	3820-3 949 (1000-3)														

BOISE, IDAHO 43°34'N-116°13'W BOISE AIR TERMINAL (GOWEN FLD) (KBOI)

HI-ILS or LOC/DME RWY 10R

