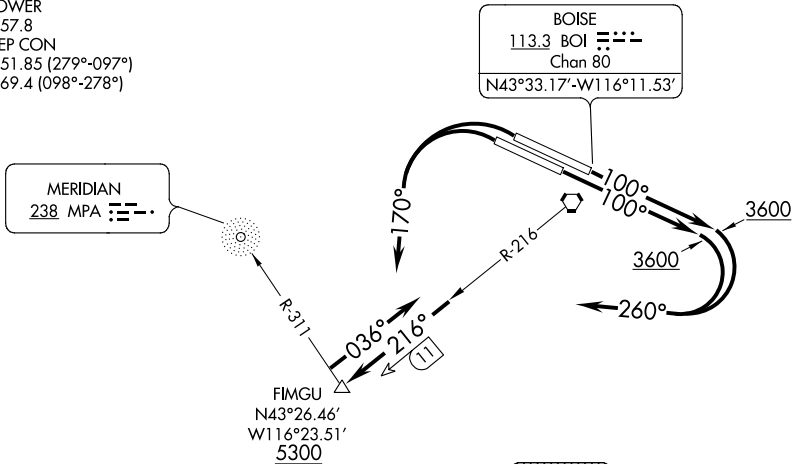


GOWEN ONE DEPARTURE (OBSTACLE)

ATIS
 123.9 290.4
 CLNC DEL
 125.9 323.2
 GND CON
 121.7 348.6
 BOISE TOWER
 118.1 257.8
 BOISE DEP CON
 126.9 351.85 (279°-097°)
 119.6 269.4 (098°-278°)



NOTE: Chart not to scale.

NOTE: ADF or DME Required

TAKE-OFF MINIMUMS

Rwy 28L/R: Standard.

Rwy 10L: Standard with minimum climb of 208' per NM to 4300 or 5500-3 for climb in visual conditions.

Rwy 10R: Standard with minimum climb of 205' per NM to 4300 or 5500-3 for climb in visual conditions.

TAKE-OFF OBSTACLE NOTES

Rwy 10L: DME antenna 5' from DER, 415' right of centerline, 21' AGL/2881' MSL.

Light on building 271' from DER, 567' left of centerline, 29' AGL/2889' MSL.

Equipment on road 462' from DER, 444' left of centerline, 17' AGL/2887' MSL.

Rwy 28R: Anemometer 452' from DER, 306' left of centerline, 11' AGL/2842' MSL.

DEPARTURE ROUTE DESCRIPTION

TAKE-OFF RUNWAY 10L/R: Climb heading 100° to 3600 then climbing right turn heading 260° to intercept and climb via BOI VORTAC R-216 outbound to cross FIMGU INT/BOI 11 DME fix at or above 5300 then via BOI R-216 to cross BOI VORTAC at or above MEA/MCA for assigned route of flight or climb in visual conditions to cross Boise Air Terminal/Gowen Field Airport at or above MEA/MCA before proceeding on assigned route of flight.

TAKE-OFF RUNWAY 28L/R: Climbing left turn heading 170° to intercept and climb via BOI VORTAC R-216 outbound to cross FIMGU INT/BOI 11 DME fix at or above 5300 then via BOI R-216 to cross BOI VORTAC at or above MEA/MCA for assigned route of flight.

GOWEN ONE DEPARTURE (OBSTACLE)

NW-1, 07 FEB 2013 to 07 MAR 2013

NW-1, 07 FEB 2013 to 07 MAR 2013