

WAAS CH 56419 W35A	APP CRS 353°	Rwy Idg TDZE Apt Elev	6099 1238 1258
--	------------------------	-----------------------------	---

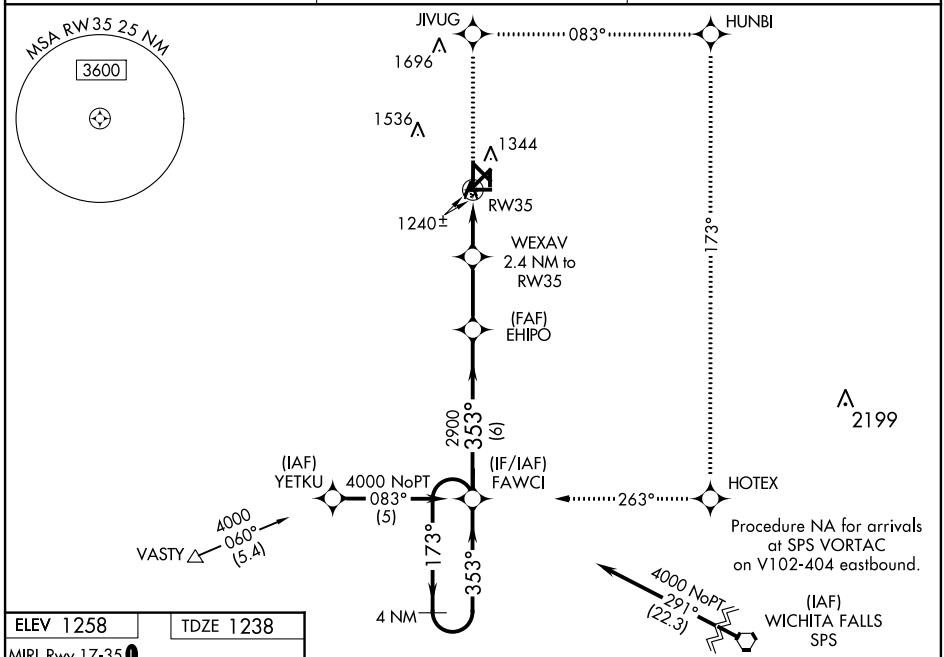
RNAV (GPS) RWY 35

FREDERICK RGNL (F'DR)

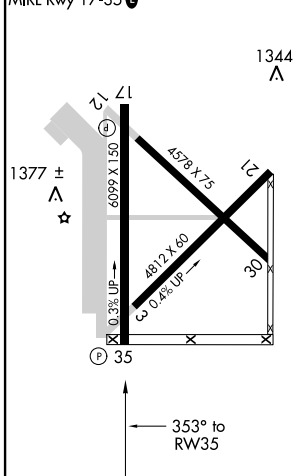
⚠ For uncompensated Baro-VNAV systems, LNAV/VNAV NA below -17°C (2°F) or above 46°C (114°F). DME/DME RNP-0.3 NA. Baro-VNAV and VDP NA when using Vernon altimeter setting. When local altimeter setting not received, use Vernon altimeter setting and increase all DA/MDA 40 feet, increase LNAV Cat C visibility ¼ mile.

MISSED APPROACH: Climb to 4000 direct JIVUG and right turn on track 083° to HUNBI and right turn on track 173° to HOTEX and right turn on track 263° to FAWCI and hold.

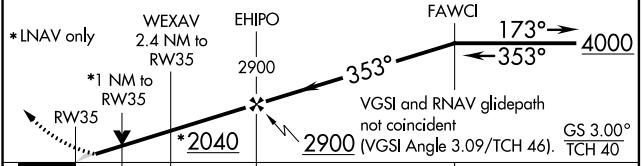
ASOS 132.675	ALTUS APP CON * 125.1 257.725	UNICOM 123.05 (CTAF) 0
------------------------	---	----------------------------------



ELEV 1258	TDZE 1238
-----------	-----------



4000	JIVUG	tr 083°	HUNBI	tr 173°	HOTEX	tr 263°	FAWCI	4 NM Holding Pattern
------	-------	---------	-------	---------	-------	---------	-------	----------------------



CATEGORY	A		B		C		D	
LPV DA	1438-¾		200 (200-¾)					
LNAV/VNAV DA	1500-1		262 (300-1)					
LNAV MDA	1600-1		362 (400-1)				1600-1¼ 362 (400-1¼)	
CIRCLING	1700-1 442 (500-1)	1720-1 462 (500-1)	1780-1½ 522 (600-1½)	1880-2 622 (700-2)				

SC-1, 07 FEB 2013 to 07 MAR 2013

SC-1, 07 FEB 2013 to 07 MAR 2013