

# VOR RWY 36

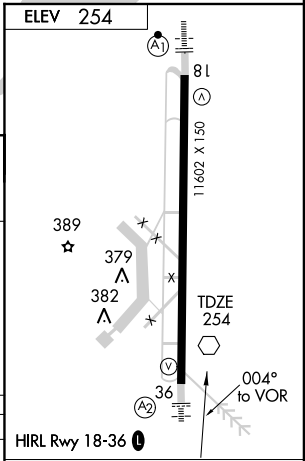
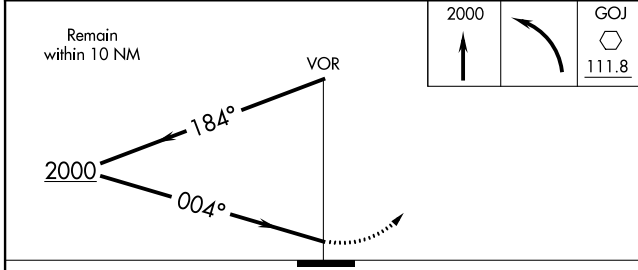
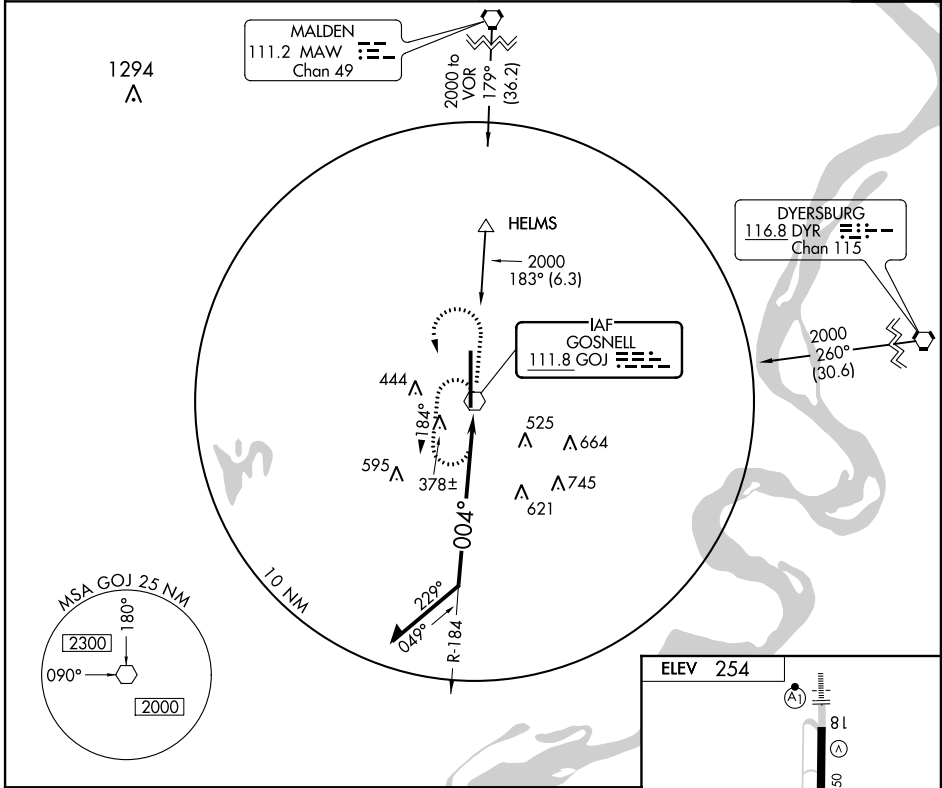
BLYTHEVILLE/ARKANSAS INTL (BYH)

VOR GOJ <b>111.8</b>	APP CRS <b>004°</b>	Rwy Idg <b>11602</b> TDZE <b>254</b> Apt Elev <b>254</b>
-------------------------	------------------------	--

**⚠** Circling NA East of Rwy 18-36. Obtain local altimeter on CTAF; when not received, use Blytheville Muni altimeter setting. Inoperative table does not apply to Cat C.

SALS **(A2)** **(A1)** MISSED APPROACH: Climb to 2000 then left turn direct GOJ VOR and hold.

MEMPHIS CENTER **134.65 316.15** UNICOM **122.7 (CTAF)** **(1)**



CATEGORY	A	B	C	D
S-36	900- $\frac{3}{4}$ 646 (700- $\frac{3}{4}$ )		900-1 $\frac{1}{4}$ 646 (700-1 $\frac{1}{4}$ )	900-2 646 (700-2)
CIRCLING	900-1 646 (700-1)		900-1 $\frac{3}{4}$ 646 (700-1 $\frac{3}{4}$ )	900-2 646 (700-2)

Knots	60	90	120	150	180
Min:Sec					

SC-1, 07 FEB 2013 to 07 MAR 2013

SC-1, 07 FEB 2013 to 07 MAR 2013