

LOC/DME I-BYH <b>110.3</b> Chan <b>40</b>	APP CRS <b>179°</b>	Rwy Idg <b>11602</b> TDZE <b>250</b> Apt Elev <b>254</b>
-------------------------------------------------	------------------------	----------------------------------------------------------------

# ILS or LOC/DME RWY 18

BLYTHEVILLE/ARKANSAS INTL (BYH)

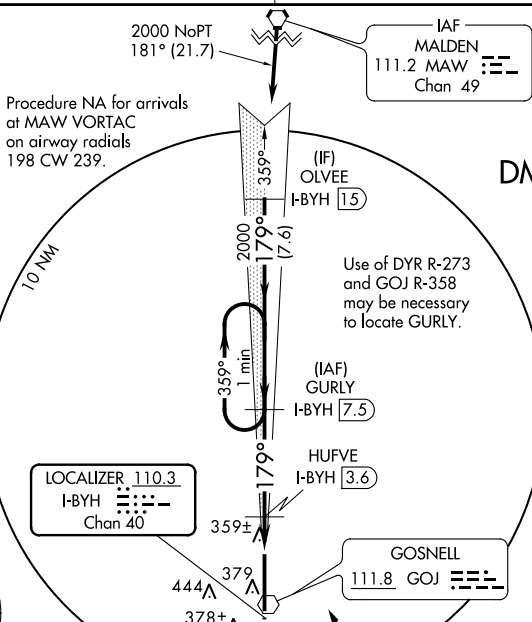
**NA** Inoperative table does not apply. Circling NA E of Rwy 18-36. Obtain local altimeter setting on CTAF; when not received, use Blytheville Muni altimeter setting and increase all DA 14 feet and all MDA 20 feet.



**MISSED APPROACH:** Climb to 2000 then left turn via heading 320° and I-BYH north course to GURLY/I-BYH 7.5 DME and hold.

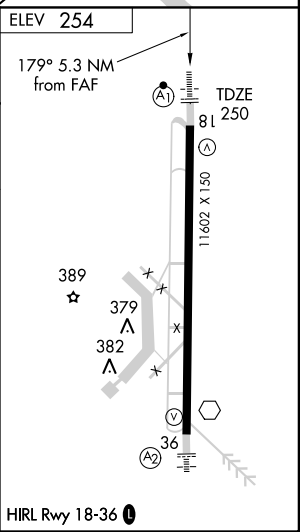
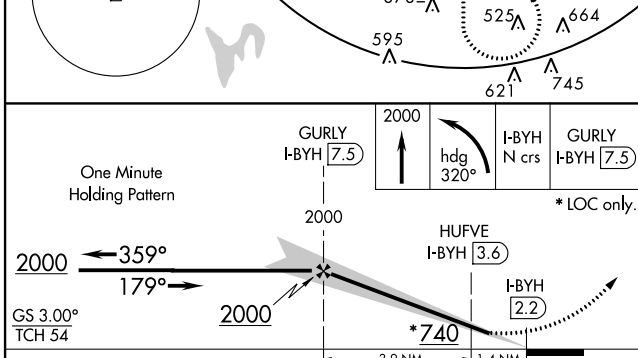
MEMPHIS CENTER <b>134.65 316.15</b>	UNICOM <b>122.7 (CTAF) 0</b>
----------------------------------------	---------------------------------

ALTERNATE MISSED APCH FIX  
GOSNELL GOJ **111.8**



SC-1, 07 FEB 2013 to 07 MAR 2013

SC-1, 07 FEB 2013 to 07 MAR 2013



CATEGORY	A	B	C	D
S-ILS 18		450- <sup>3</sup> / <sub>4</sub>	200 (200- <sup>3</sup> / <sub>4</sub> )	
S-LOC 18		620-1	370 (400-1)	620-1 <sup>1</sup> / <sub>4</sub> 370 (400-1 <sup>1</sup> / <sub>4</sub> )
CIRCLING	700-1 446 (500-1)	720-1 466 (500-1)	720-1 <sup>1</sup> / <sub>2</sub> 466 (500-1 <sup>1</sup> / <sub>2</sub> )	820-2 566 (600-2)