

BLYTHE, CALIFORNIA

AL-53 (FAA)

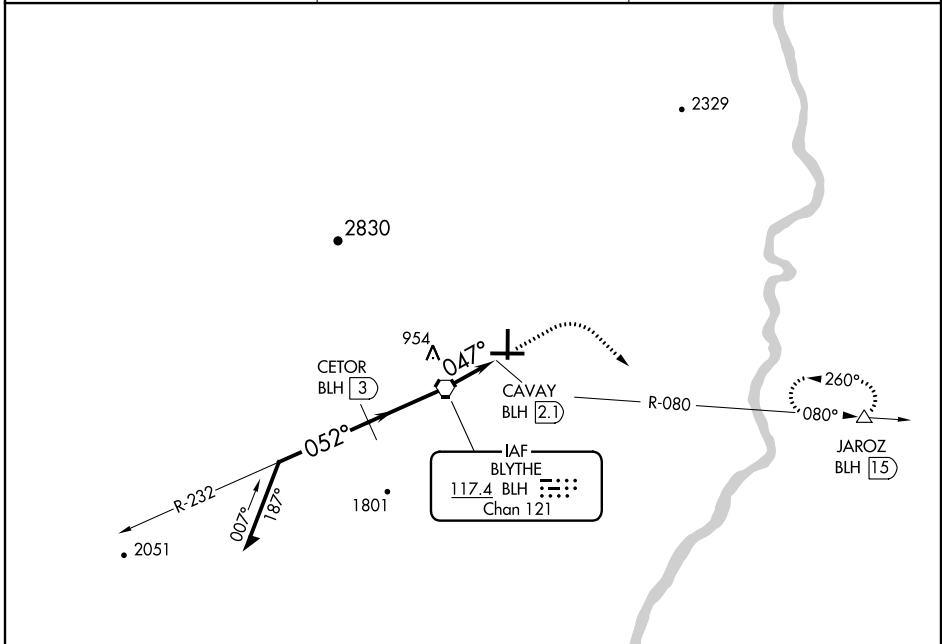
# VOR/DME-A

BLYTHE (BLH)

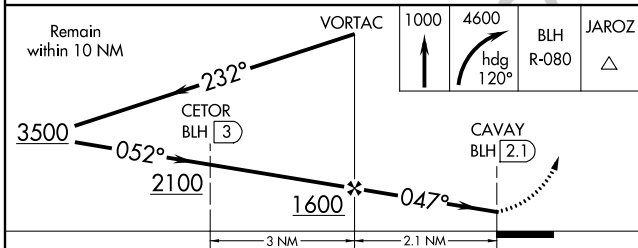
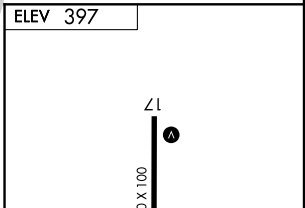
VORTAC BLH <b>117.4</b> Chan <b>121</b>	APP CRS <b>047°</b>	Rwy Idg TDZE Apt Elev <b>N/A</b> <b>N/A</b> <b>397</b>
---	------------------------	---

**⚠** MISSED APPROACH: Climb to 1000, then climbing right turn to 4600 via heading 120° and BLH R-080 outbound to JAROZ/15 DME and hold.

ASOS <b>120.175</b>	LOS ANGELES CENTER <b>128.15 285.6</b>	UNICOM <b>122.8 (CTAF)</b>
------------------------	---	-------------------------------



SW-3, 07 FEB 2013 to 07 MAR 2013



MIRL Rwy 8-26 and 17-35

BLYTHE, CALIFORNIA  
Orig-A 11349

33° 37'N - 114° 43'W

# BLYTHE (BLH)

## VOR/DME-A