

WAAS CH 45626 W26A	APP CRS 246°	Rwy Idg THRE 396 Apt Elev 400	6543
--	------------------------	---	-------------

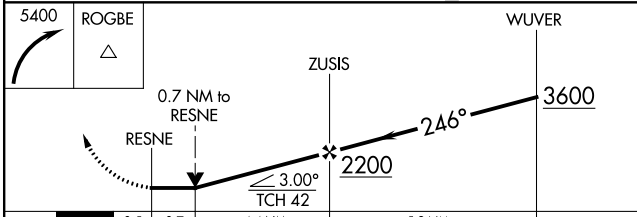
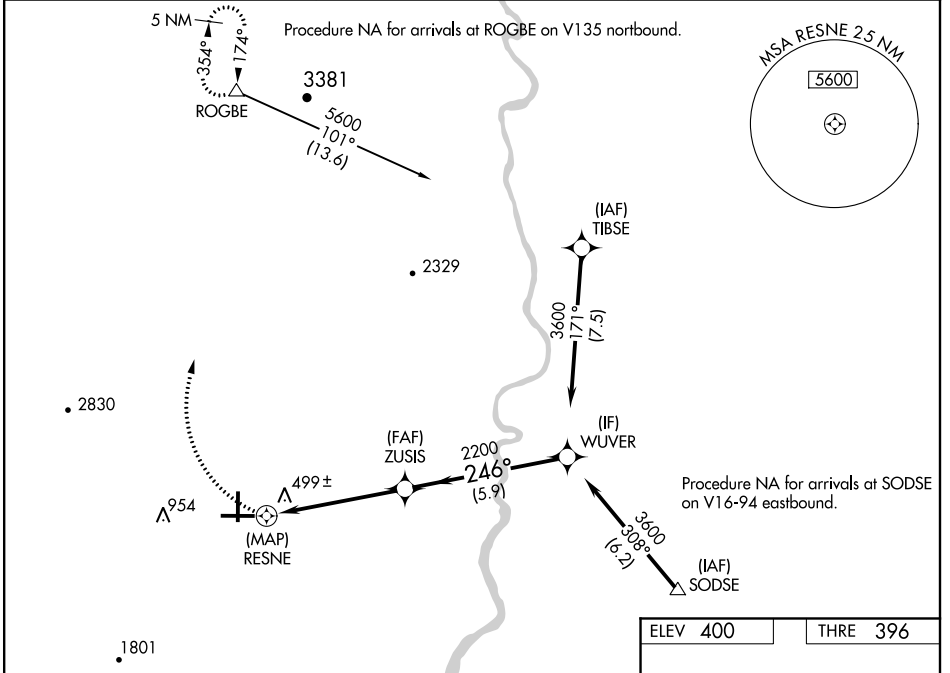
RNAV (GPS) RWY 26

BLYTHE (BLH)

⚠ **Missed approach requires a minimum climb of 375 feet per NM to 3500.
⚠ *Missed approach requires a minimum climb of 345 feet per NM to 3500.
 When local altimeter setting not received, procedure NA.
 DME/DME RNP-0.3 NA. Visibility reduction by helicopters NA.

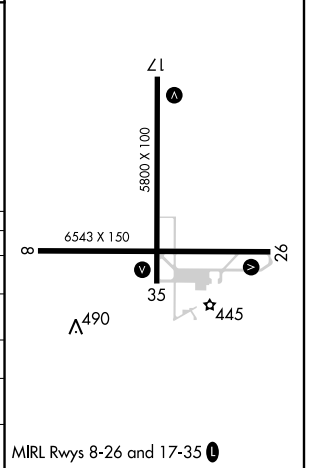
MISSED APPROACH: Climbing right turn to 5400
 direct ROGBE and hold, continue climb-in-hold to 5400.

ASOS 120.175	LOS ANGELES CENTER 128.15 285.6	UNICOM 122.8 (CTAF) 📻
------------------------	---	--



ELEV 400	THRE 396
----------	----------

CATEGORY	A	B	C	D
*LP MDA	800-1	404 (400-1)	800-1½	404 (400-1½)
LP MDA	1940-1¼ 1544 (1600-1¼)	1940-1½ 1544 (1600-1½)	1940-3	1544 (1600-3)
**LNAV MDA	800-1	404 (400-1)	800-1½	404 (400-1½)
LNAV MDA	2060-1¼ 1664 (1700-1¼)	2060-1½ 1664 (1700-1½)	2060-3	1664 (1700-3)
CIRCLING	2060-1¼ 1660 (1700-1¼)	2060-1½ 1660 (1700-1½)	2060-3	1660 (1700-3)



MIRL Rwy's 8-26 and 17-35 **📻**

SW-3, 07 FEB 2013 to 07 MAR 2013

SW-3, 07 FEB 2013 to 07 MAR 2013