

BLACKSTONE, VIRGINIA

APP CRS 058°  
 Rwy Idg 5332  
 TDZE 429  
 Apt Elev 439

AL-52 (FAA)

# RNAV (GPS) RWY 4

BLACKSTONE/ALLEN C. PERKINSON BLACKSTONE AAF (BKT)

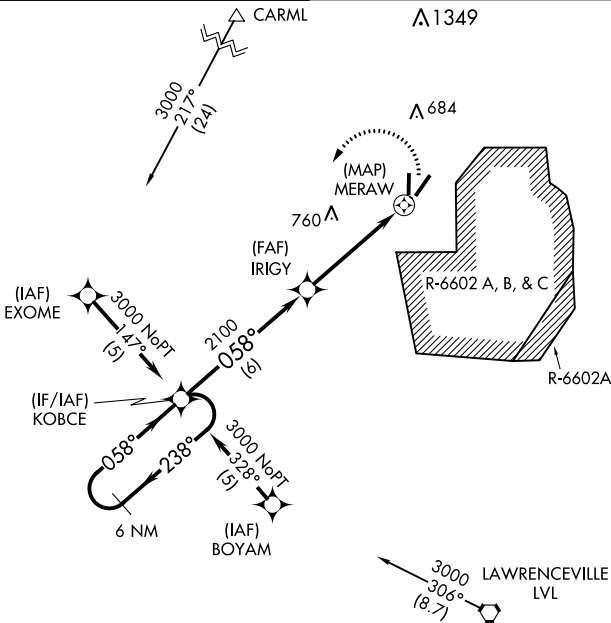
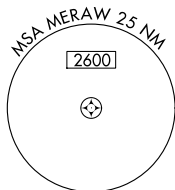
Use Mecklenburg-Brunswick Rgnl altimeter setting.  
 Circling NA East of Rwy 4-22. DME/DME RNP-0.3 NA.

MISSED APPROACH: Climbing left turn to 3000 direct KOBCE and hold.

WASHINGTON CENTER  
 118.75 377.1

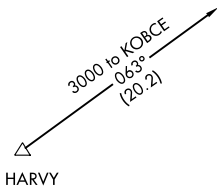
BLACKSTONE TOWER ★  
 126.2 248.675

UNICOM  
 122.95 (CTAF) ①

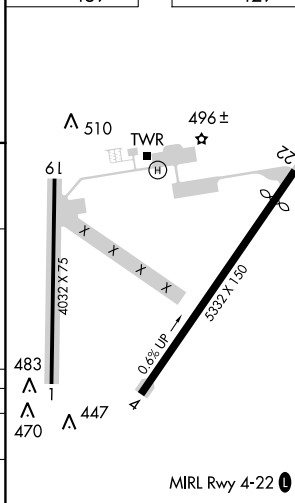


NE-3, 07 FEB 2013 to 07 MAR 2013

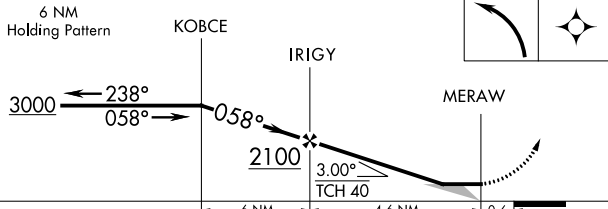
NE-3, 07 FEB 2013 to 07 MAR 2013



ELEV 439 TDZE 429



6 NM Holding Pattern



CATEGORY	A	B	C	D
LNAV MDA	940-1	511 (600-1)	940-1½ 511 (600-1½)	NA
CIRCLING	940-1	501 (600-1)	940-1½ 501 (600-1½)	NA

BLACKSTONE, VIRGINIA  
 Orig 12152

BLACKSTONE/ALLEN C. PERKINSON BLACKSTONE AAF (BKT)  
 37°04'N-77°57'W

# RNAV (GPS) RWY 4

MIRL Rwy 4-22 ①