

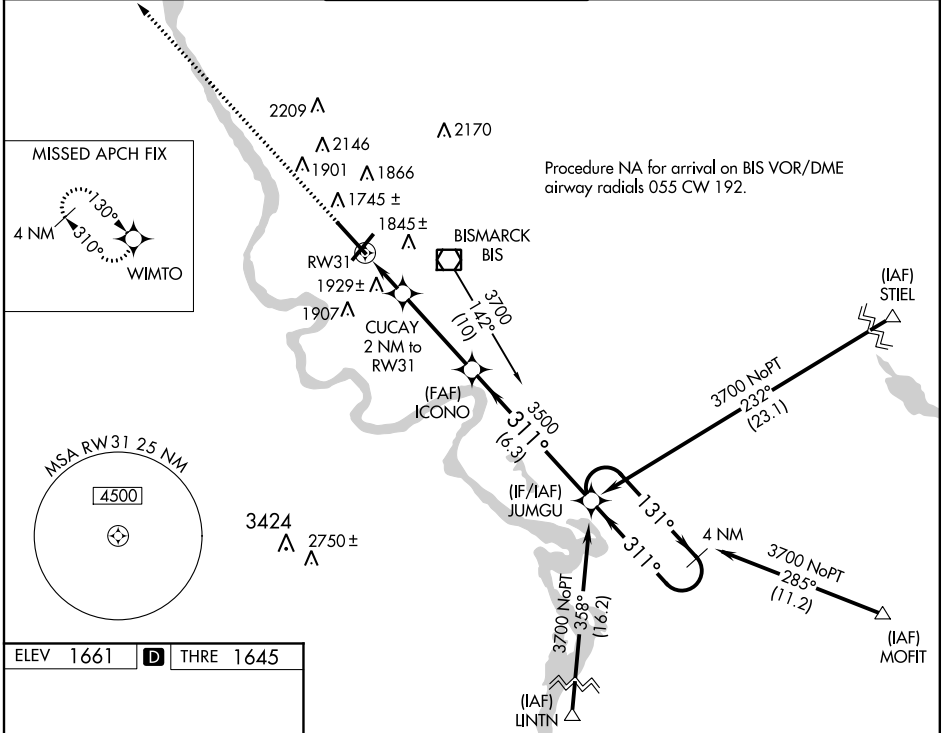
WAAS CH <b>56599</b> <b>W31A</b>	APP CRS <b>311°</b>	Rwy ldg THRE Apt Elev <b>8794</b> <b>1645</b> <b>1661</b>
--	------------------------	--

# RNAV (GPS) RWY 31

BISMARCK MUNI (BIS)

ASR	For uncompensated Baro-VNAV systems, LNAV/VNAV NA below -18°C (0°F) or above 33°C (91°F). DME/DME RNP-0.3 NA.	MALSR	MISSED APPROACH: Climb to 3800 direct WIMTO and hold.
-----	--	-------	---

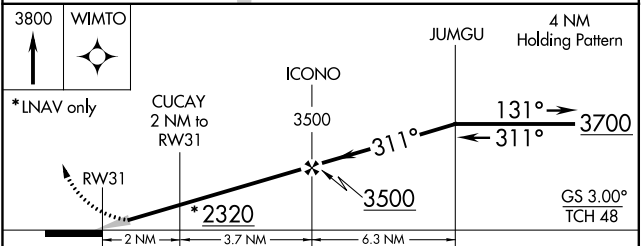
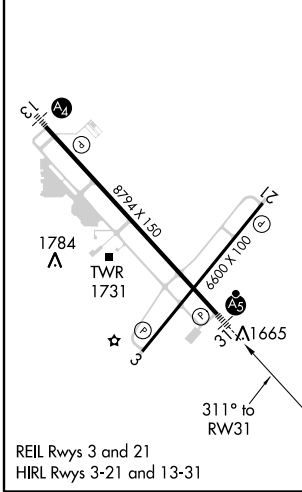
ATIS <b>119.35</b>	BISMARCK APP CON* <b>126.3 298.9</b>	BISMARCK TOWER* <b>118.3</b> (CTAF) <b>0 257.8</b>	GND CON <b>121.9</b>	UNICOM <b>122.95</b>
-----------------------	---	---	-------------------------	-------------------------



NC-1, 07 FEB 2013 to 07 MAR 2013

NC-1, 07 FEB 2013 to 07 MAR 2013

ELEV 1661	<b>D</b>	THRE 1645
-----------	----------	-----------



CATEGORY	A	B	C	D
LPV DA	1845/24 200 (200-½)			
LNAV/VNAV DA	2269-1¾ 624 (700-1¾)			
LNAV MDA	2180/24	535 (600-½)	2180/55	535 (600-1¾)
CIRCLING	2240-1	579 (600-1)	2240-1½	2320-2
			579 (600-½)	659 (700-2)