

WAAS CH <b>63099</b> <b>W03A</b>	APP CRS <b>032°</b>	Rwy ldg THRE Apt Elev <b>1661</b> <b>1661</b>
--	------------------------	---

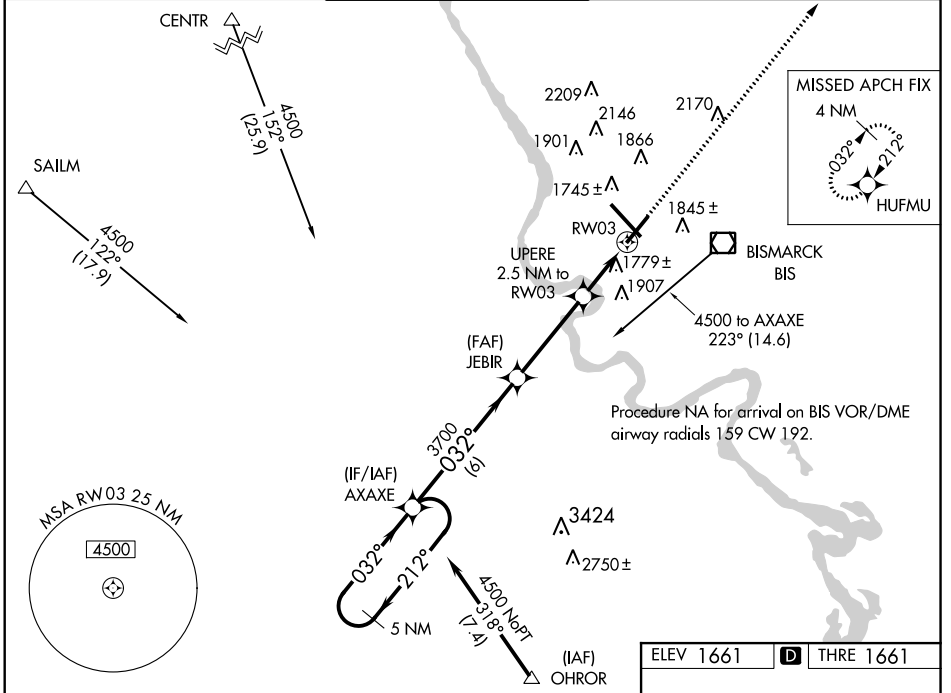
# RNAV (GPS) RWY 3

BISMARCK MUNI (BIS)

**ASR** For uncompensated Baro-VNAV systems, LNAV/VNAV NA below -18°C (0°F) or above 33°C (91°F). DME/DME RNP-0.3 NA.

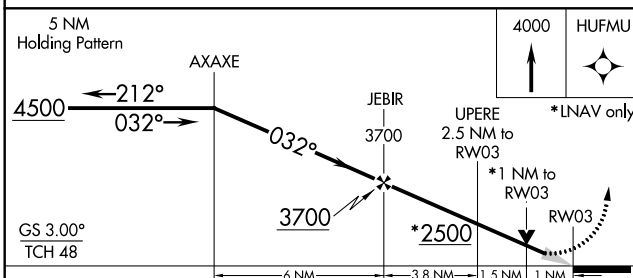
**MISSED APPROACH:** Climb to 4000 direct HUFMU and hold.

ATIS <b>119.35</b>	BISMARCK APP CON* <b>126.3 298.9</b>	BISMARCK TOWER* <b>118.3 (CTAF) 0 257.8</b>	GND CON <b>121.9</b>	UNICOM <b>122.95</b>
-----------------------	---	--	-------------------------	-------------------------



NC-1, 07 FEB 2013 to 07 MAR 2013

NC-1, 07 FEB 2013 to 07 MAR 2013



CATEGORY	A	B	C	D
LPV DA		1861-3/4	200 (200-3/4)	
LNAV/VNAV DA		2081-13/8	420 (500-13/8)	
LNAV MDA		2040-1	379 (400-1)	
CIRCLING	2240-1	579 (600-1)	2240-1 1/2 579 (600-1 1/2)	2320-2 659 (700-2)

