

WAAS CH 53520 W21A	APP CRS 212°	Rwy Idg THRE Apt Elev 6600 1661
--	------------------------	---

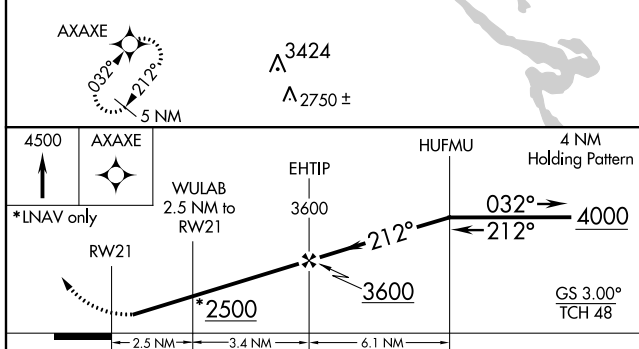
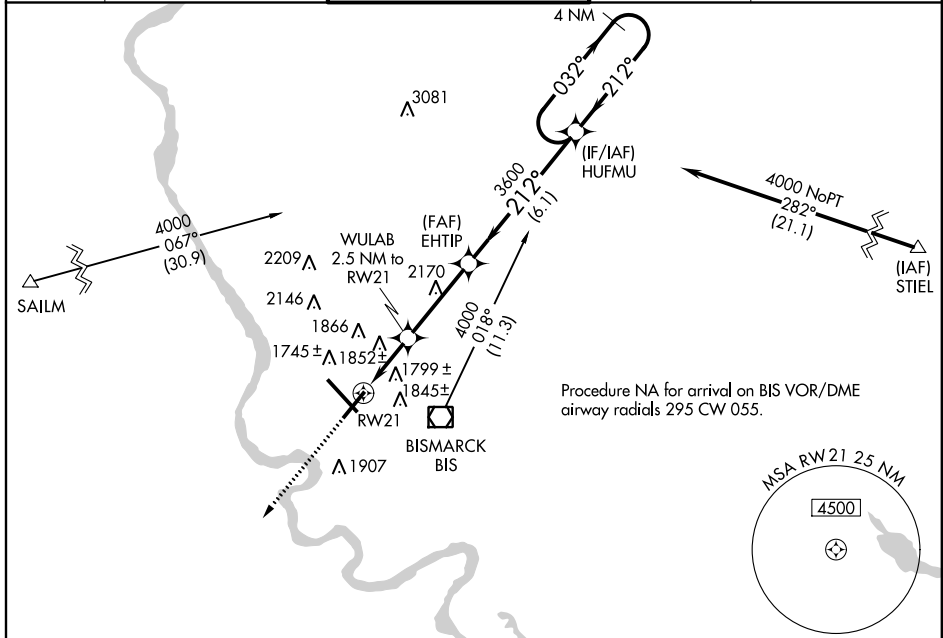
RNAV (GPS) RWY 21

BISMARCK MUNI (BIS)

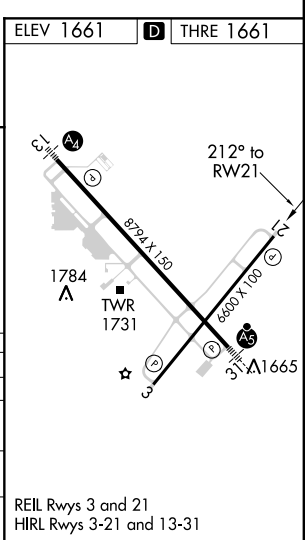
ASR For uncompensated Baro-VNAV systems, LNAV/VNAV NA below -18°C (0°F) or above 33°C (91°F). When VGSI inoperative, procedure NA at night.
DME/DME RNP-0.3 NA. Visibility reduction by helicopters NA.

MISSED APPROACH: Climb to 4500 direct AXAXE and hold.

ATIS 119.35	BISMARCK APP CON* 126.3 298.9	BISMARCK TOWER* 118.3(CTAF) 0 257.8	GND CON 121.9	UNICOM 122.95
-----------------------	---	---	-------------------------	-------------------------



CATEGORY	A	B	C	D
LPV DA	1911-1 250 (300-1)			
LNAV/VNAV DA	2105-1½		444 (500-1½)	
LNAV MDA	2120-1 459 (500-1)		2120-1⅓ 459 (500-1⅓)	
CIRCLING	2240-1 579 (600-1)		2320-2 659 (700-2)	



REIL Rwy 3 and 21
HIRL Rwy 3-21 and 13-31

NC-1, 07 FEB 2013 to 07 MAR 2013

NC-1, 07 FEB 2013 to 07 MAR 2013