

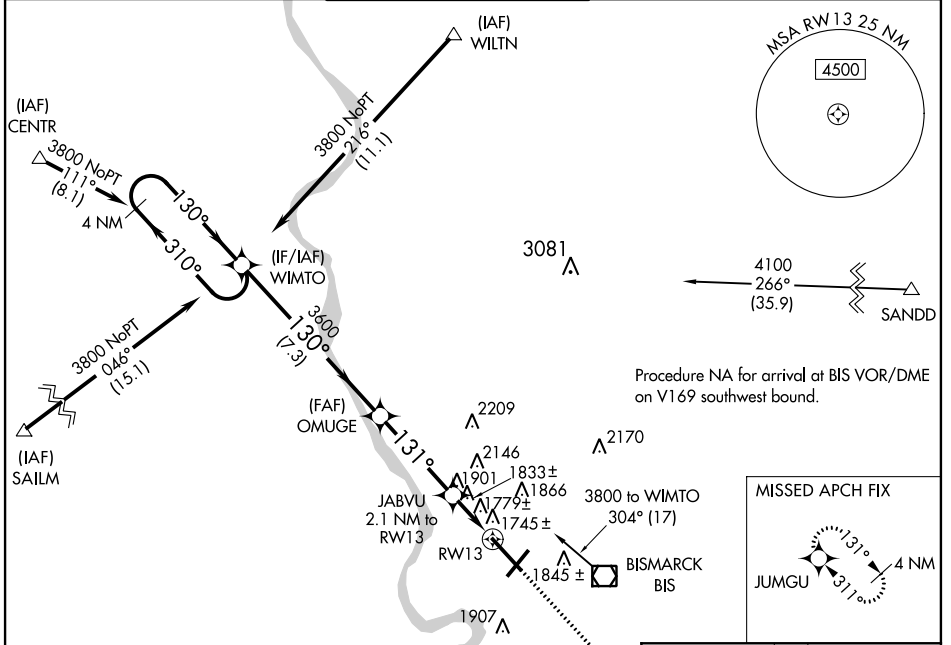
WAAS CH 86920 W13A	APP CRS 131°	Rwy Idg THRE 1654 Apt Elev 1661
--	------------------------	---

RNAV (GPS) RWY 13

BISMARCK MUNI (BIS)

ASR	Inoperative table does not apply. For uncompensated Baro-VNAV systems, LNAV/VNAV NA below -18°C (0°F) or above 33°C (91°F). DME/DME RNP-0.3 NA.	MALS	MISSED APPROACH: Climb to 3700 direct JUMGU and hold.
-----	---	------	---

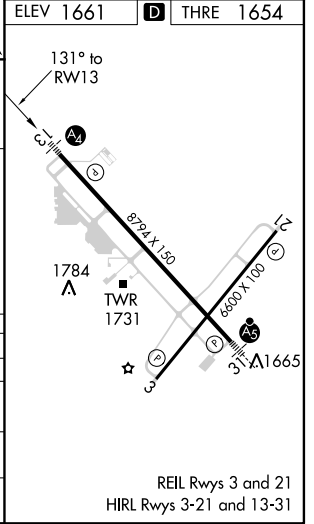
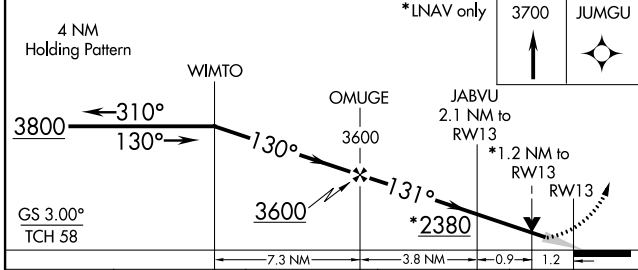
ATIS 119.35	BISMARCK APP CON * 126.3 298.9	BISMARCK TOWER * 118.3 (CTAF) 0 257.8	GND CON 121.9	UNICOM 122.95
-----------------------	--	---	-------------------------	-------------------------



NC-1, 07 FEB 2013 to 07 MAR 2013

NC-1, 07 FEB 2013 to 07 MAR 2013

ELEV 1661	D THRE 1654
-----------	--------------------



CATEGORY	A	B	C	D
LPV DA		1854-3/4	200 (200-3/4)	
LNAV/VNAV DA		2082-1 3/8	428 (500-1 3/8)	
LNAV MDA	2100-1 446 (500-1)		2100-1 3/8 446 (500-1 3/8)	
CIRCLING	2240-1 579 (600-1)		2240-1 1/2 579 (600-1 1/2)	2320-2 659 (700-2)

REIL Rwy 3 and 21
HIRL Rwy 3-21 and 13-31