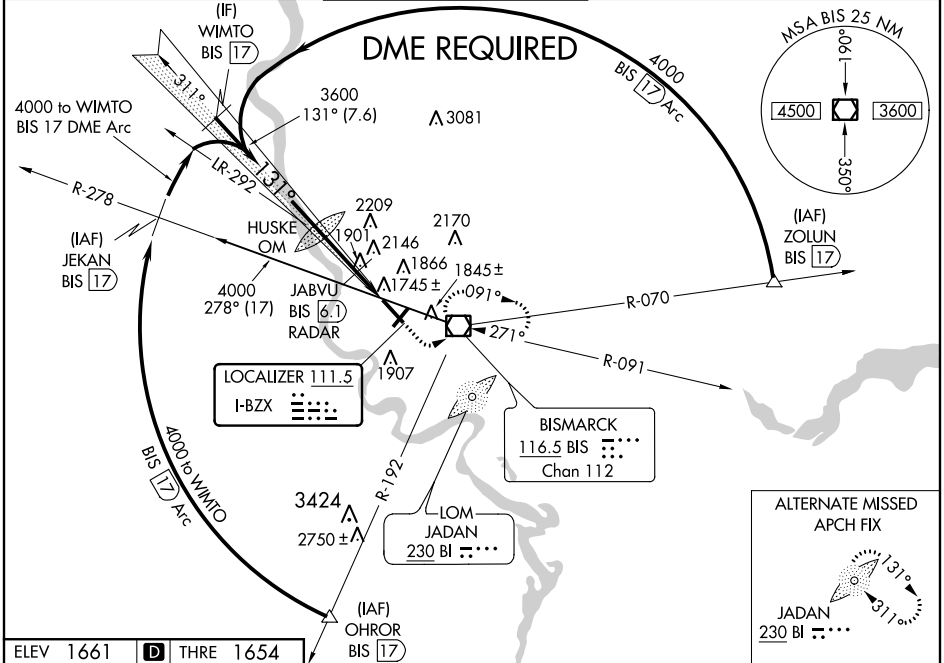


LOC I-BZX 111.5	APP CRS 131°	Rwy Idg THRE 1654 Apt Elev 1661
---------------------------	------------------------	---

ILS or LOC RWY 13
BISMARCK MUNI (BIS)

▲ Inoperative table does not apply. **MALS** MISSED APPROACH: Climb to 2200 then climbing left turn to 3600 direct BIS VOR/DME and hold, continue climb-in-hold to 3600.

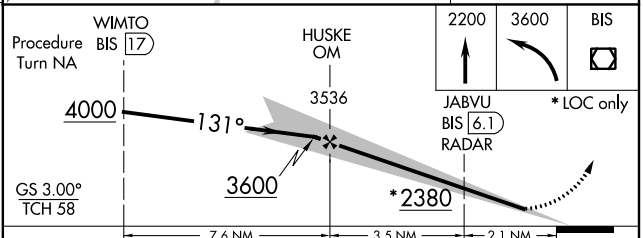
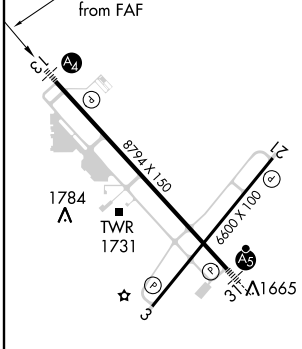
ATIS 119.35	BISMARCK APP CON * 126.3 298.9	BISMARCK TOWER * 118.3 (CTAF) 257.8	GND CON 121.9	UNICOM 122.95
-----------------------	--	---	-------------------------	-------------------------



NC-1, 07 FEB 2013 to 07 MAR 2013

NC-1, 07 FEB 2013 to 07 MAR 2013

ELEV 1661	D THRE 1654
-----------	--------------------



GS 3.00° TCH 58	A	B	C	D
S-ILS 13	1854-¾ 200 (200-¾)			
S-LOC 13	2380-1 726 (800-1)	2380-2 726 (800-2)		
CIRCLING	2380-1 719 (800-1)	2380-2 719 (800-2)	2380-2½ 719 (800-2½)	
JABVU FIX MINIMUMS				
S-LOC 13	2160-1 506 (500-1)	2160-1½ 506 (500-1½)		
CIRCLING	2240-1 579 (600-1)	2240-1½ 579 (600-1½)	2320-2 659 (700-2)	

REIL Rwy 3 and 21
HIRL Rwy 3-21 and 13-31

FAF to MAP 5.6 NM

Knots	60	90	120	150	180
Min:Sec	5:36	3:44	2:48	2:14	1:52