

APP CRS **058°**
 Rwy ldg **11998**
 TDZE **606**
 Apt Elev **650**

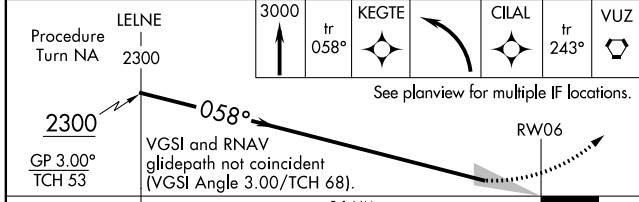
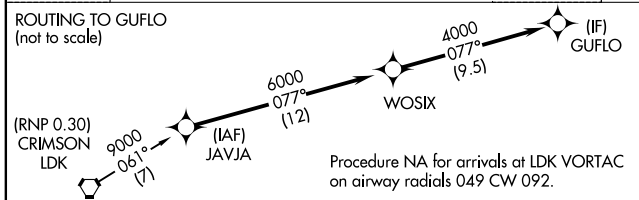
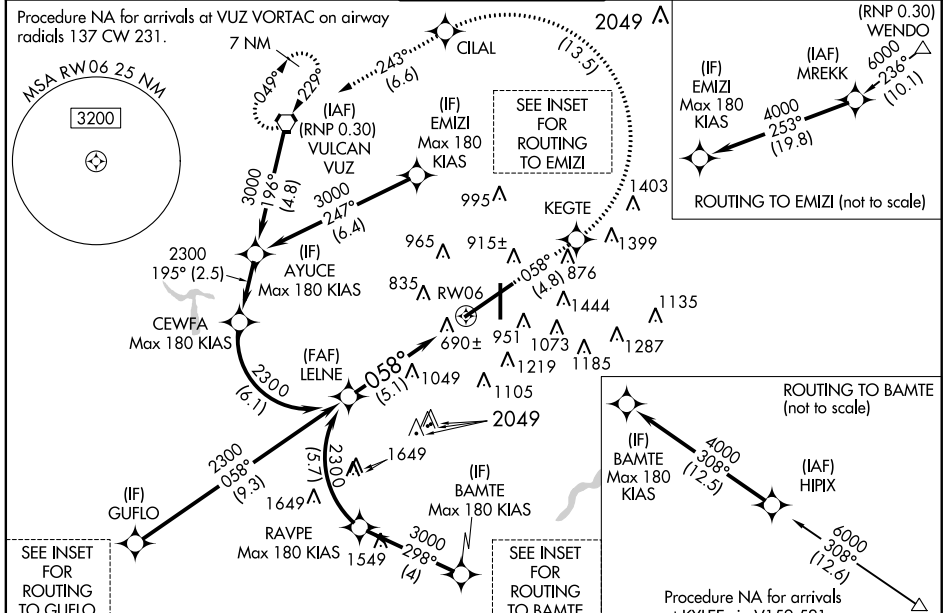
RNAV (RNP) Z RWY 6

BIRMINGHAM-SHUTTLESWORTH INTL (BHM)

RF and GPS required. For uncompensated Baro-VNAV systems, procedure NA below -8°C (18°F) or above 47°C (117°F). For inoperative ALSF-2, increase RNP 0.30 all Cats visibility to 1¼ mile.

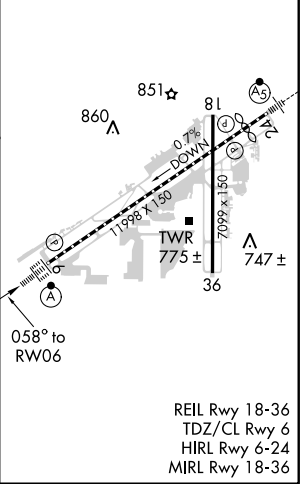
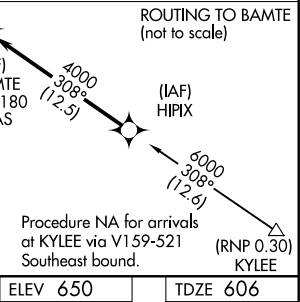
ALSF-2
MISSED APPROACH: Climb to 3000 on track 058° to KEGTE and left turn to CILAL and track 243° to VUZ VORTAC and hold.

ATIS 119.4 270.1	BIRMINGHAM APP CON 123.8 256.8	BIRMINGHAM TOWER 119.9 317.725	GND CON 121.7 348.6	CLNC DEL 125.675 305.2
----------------------------	--	--	-------------------------------	----------------------------------



CATEGORY	A	B	C	D
RNP 0.30 DA	1115/60		509 (500-1¼)	

AUTHORIZATION REQUIRED



SE-4, 07 FEB 2013 to 07 MAR 2013

SE-4, 07 FEB 2013 to 07 MAR 2013