

| | | |
|-------------|----------|--------------|
| APP CRS | Rwy Idg | 10801 |
| 239° | TDZE | 650 |
| | Apt Elev | 650 |

RNAV (RNP) Z RWY 24

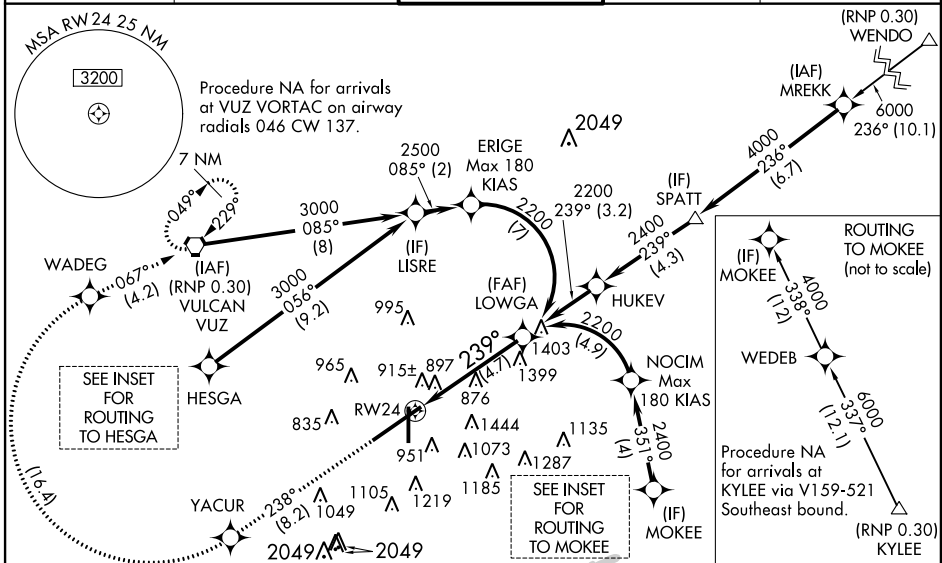
BIRMINGHAM-SHUTTLESWORTH INTL (BHM)

RF and GPS required. For uncompensated Baro-VNAV systems, procedure NA below -8°C (17°F) or above 47°C (117°F). For inoperative MALS, increase RNP 0.15 all Cats visibility to 1¼ mile. For inoperative MALS, increase RNP 0.30 all Cats visibility to 2 mile.



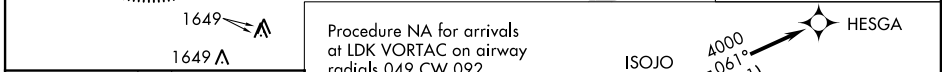
MISSED APPROACH: Climb to 3000 on track 238° to YACUR and right turn to WADEG and track 067° to VUZ VORTAC and hold.

| | | | | |
|--------------------|--------------------|----------------------|--------------------|----------------------|
| ATIS | BIRMINGHAM APP CON | BIRMINGHAM TOWER | GND CON | CLNC DEL |
| 119.4 270.1 | 123.8 256.8 | 119.9 317.725 | 121.7 348.6 | 125.675 305.2 |

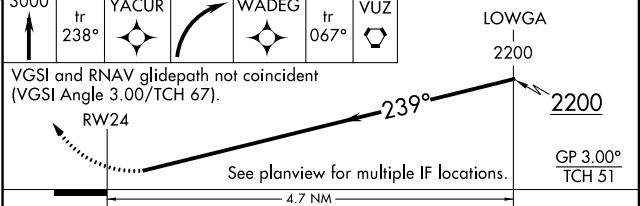
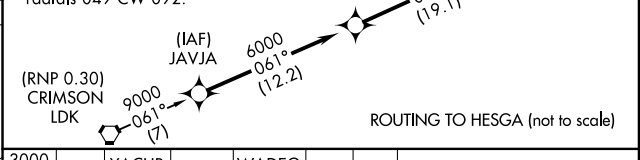
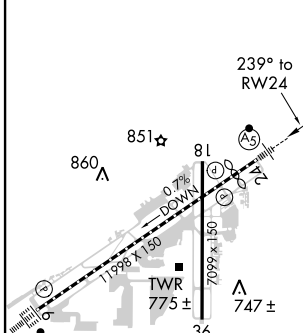


SE-4, 07 FEB 2013 to 07 MAR 2013

SE-4, 07 FEB 2013 to 07 MAR 2013



| | | | |
|------|-----|------|-----|
| ELEV | 650 | TDZE | 650 |
|------|-----|------|-----|



| CATEGORY | A | B | C | D |
|-------------|---|---------|--------------|---|
| RNP 0.15 DA | | 1139/60 | 489 (500-1¼) | |
| RNP 0.30 DA | | 1245-1¼ | 595 (600-1¼) | |

AUTHORIZATION REQUIRED